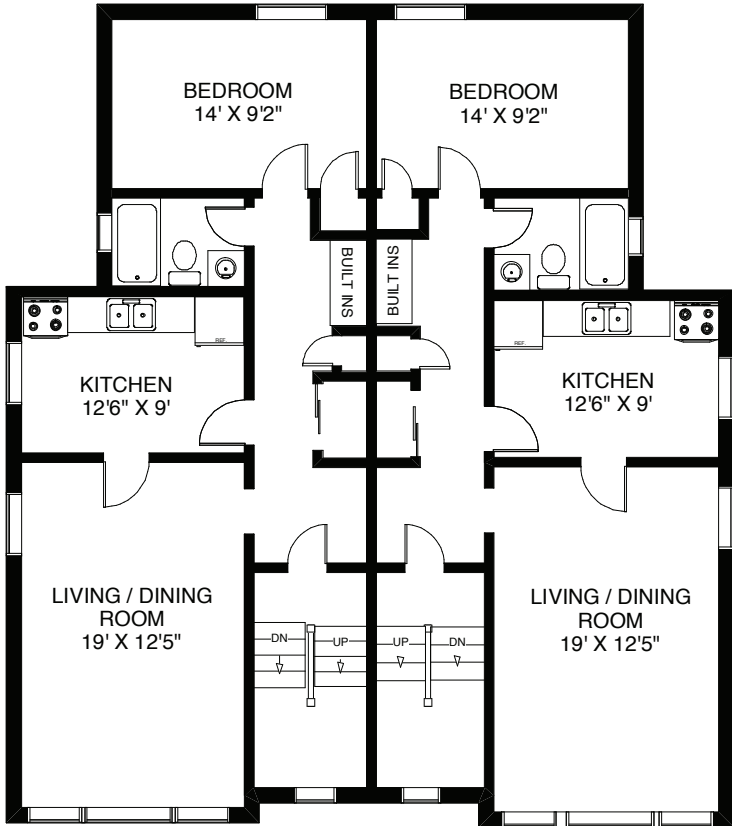
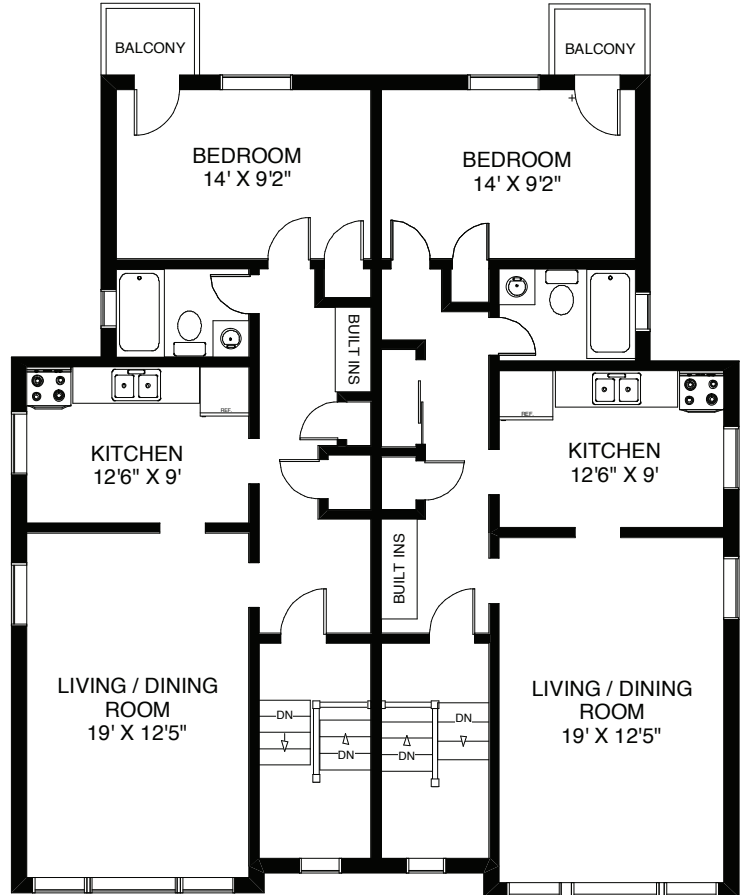


# 247 / 249 HIGH PARK AVENUE

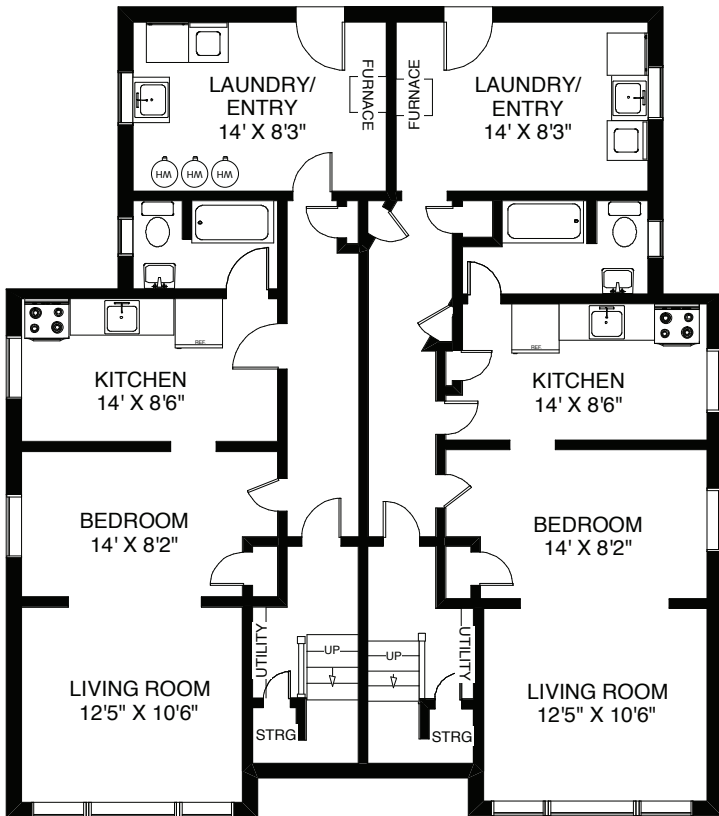
APPROXIMATELY 3,200 SQ FT ABOVE GRADE



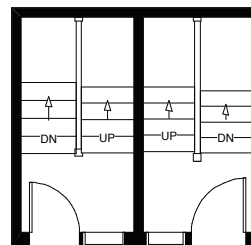
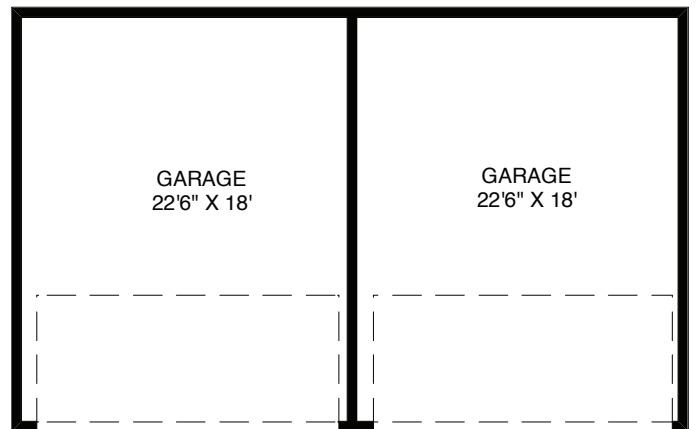
CEILING HT 8'  
GROUND FLOOR  
APPROXIMATELY 1,600 SQ FT



CEILING HT 8'  
UPPER FLOOR  
APPROXIMATELY 1,600 SQ FT



CEILING HT 7'9"  
LOWER FLOOR  
APPROXIMATELY 1,600 SQ FT



ENTRY

**BABIAK**  
TEAM REAL ESTATE

Note: Measurements & Calculations are approximate. Provided as a guideline only.