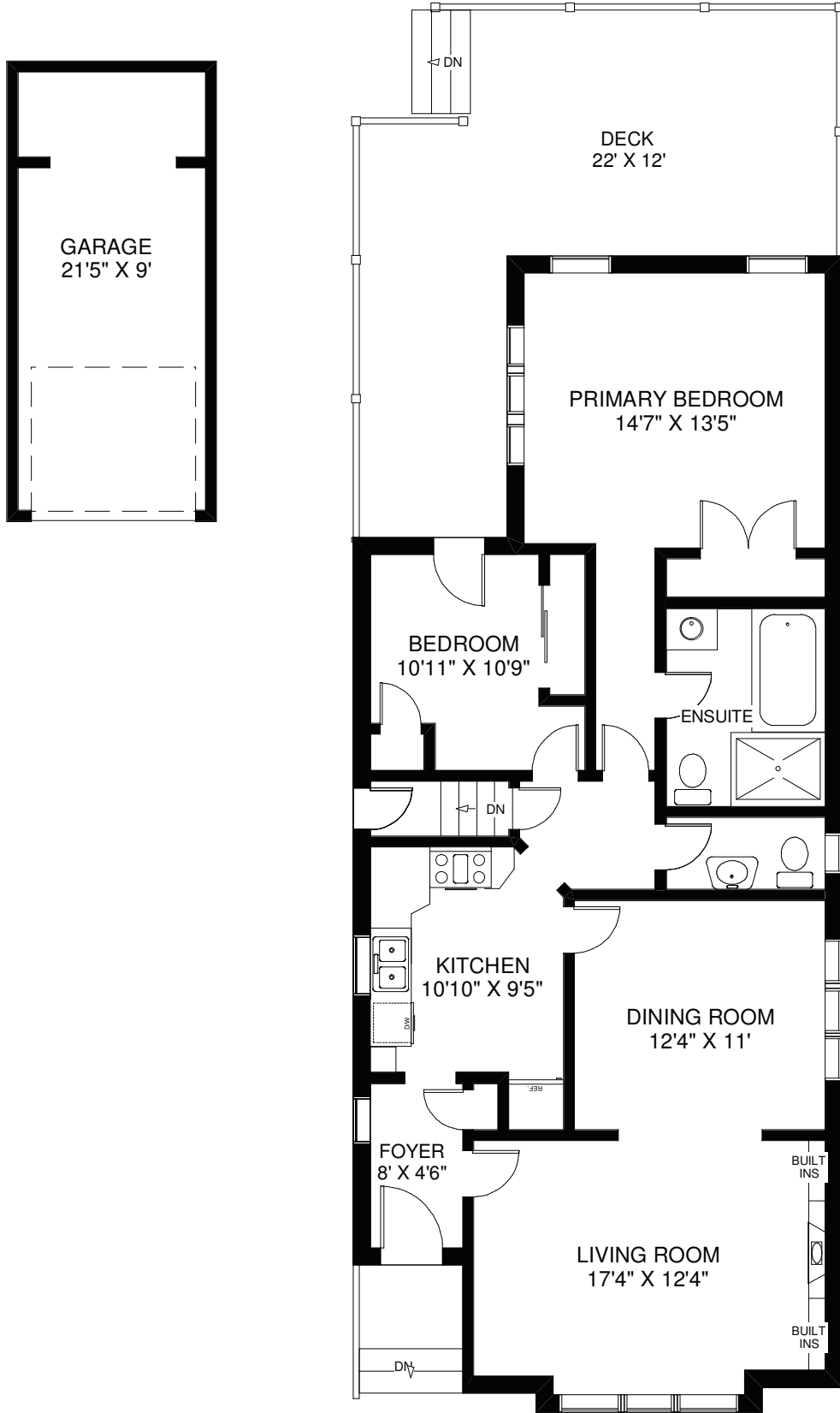


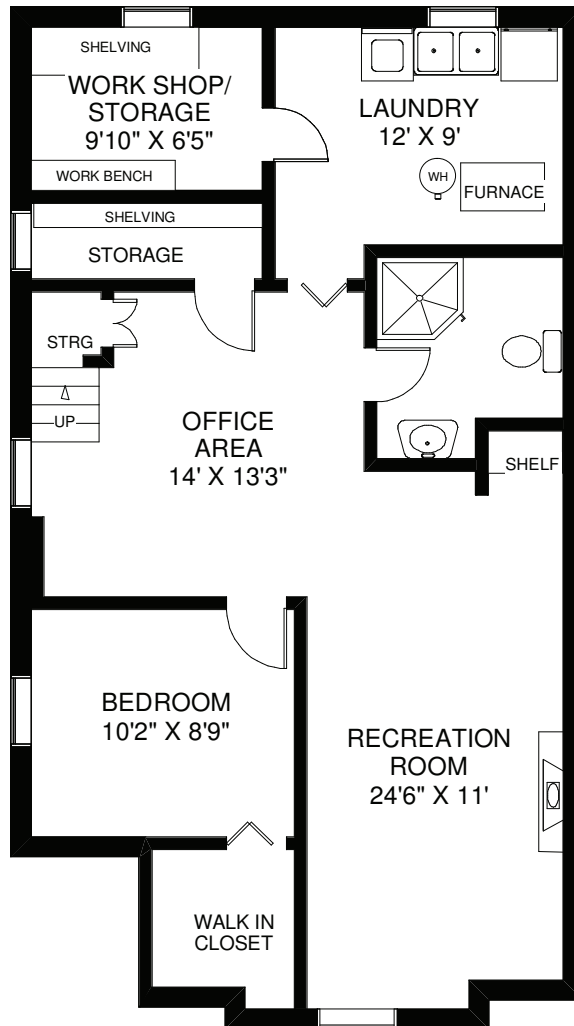
16 HALFORD AVENUE



CEILING HT 8'2"

MAIN FLOOR
APPROXIMATELY 1,200 SQ FT

16 HALFORD AVENUE



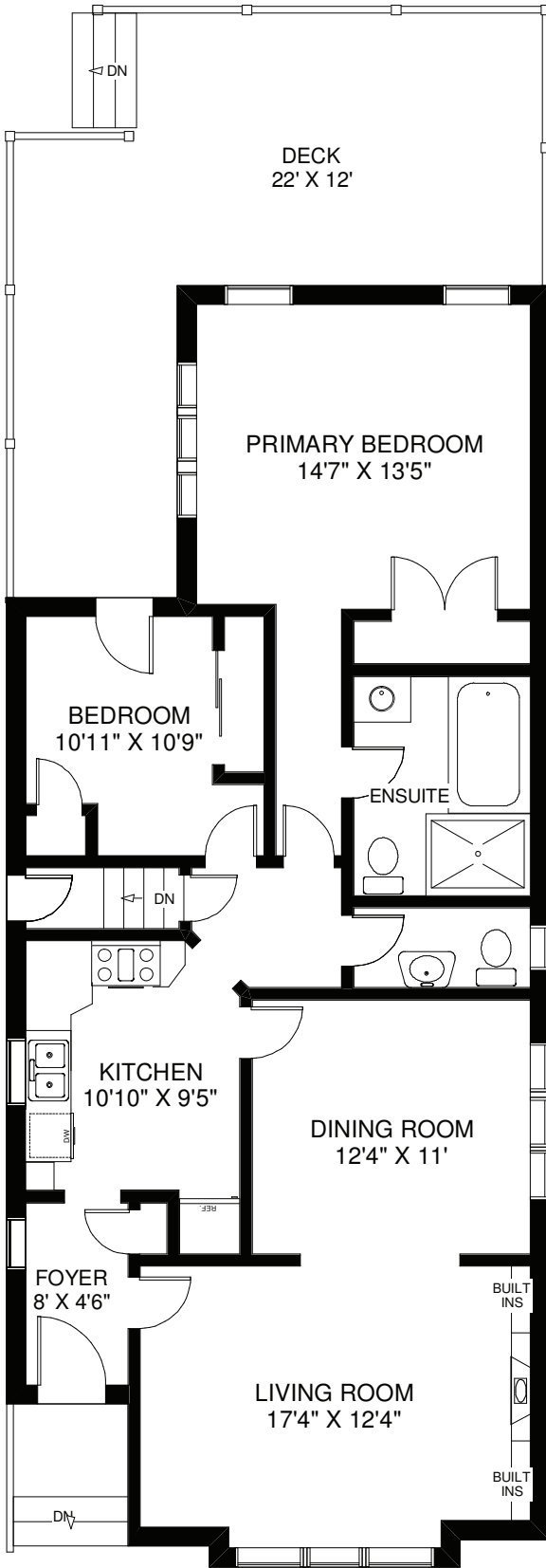
CEILING HT 6'5"

LOWER FLOOR
APPROXIMATELY 970 SQ FT

Note: Measurements & Calculations are approximate. Provided as a guideline only.

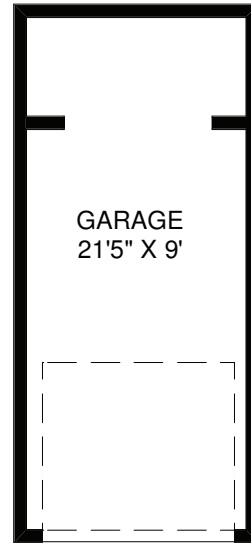
BABIAK
TEAM REAL ESTATE

16 HALFORD AVENUE



CEILING HT 8'2"

MAIN FLOOR
APPROXIMATELY 1,200 SQ FT



CEILING HT 6'5"

LOWER FLOOR
APPROXIMATELY 970 SQ FT

