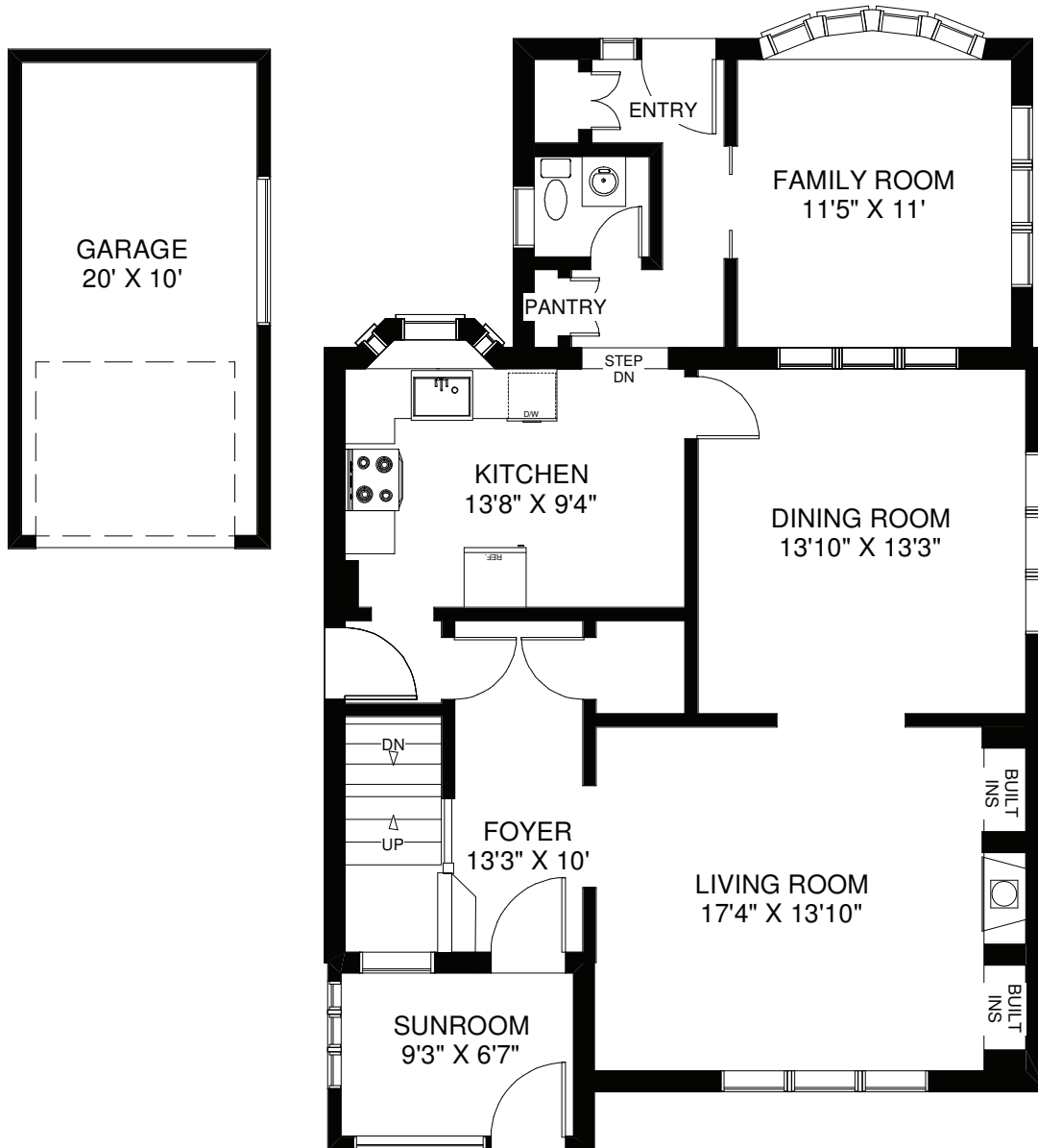


53 BABY POINT ROAD

TOTAL 1,965 SQ FT ABOVE GRADE

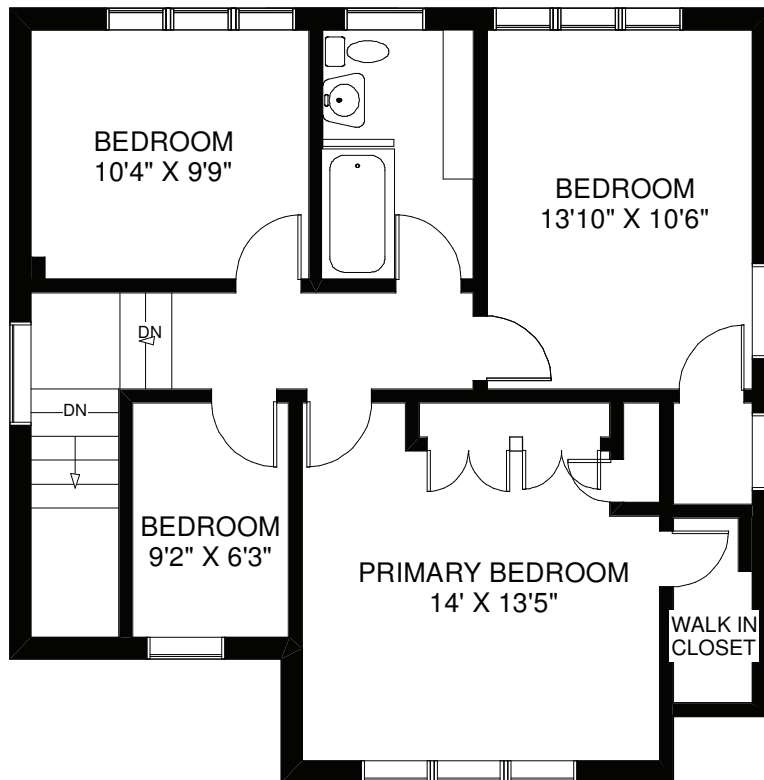


CEILING HT 8'

MAIN FLOOR
APPROXIMATELY 1,150 SQ FT
INCLUDING SUNROOM

Note: Measurements & Calculations are approximate. Provided as a guideline only.

53 BABY POINT ROAD

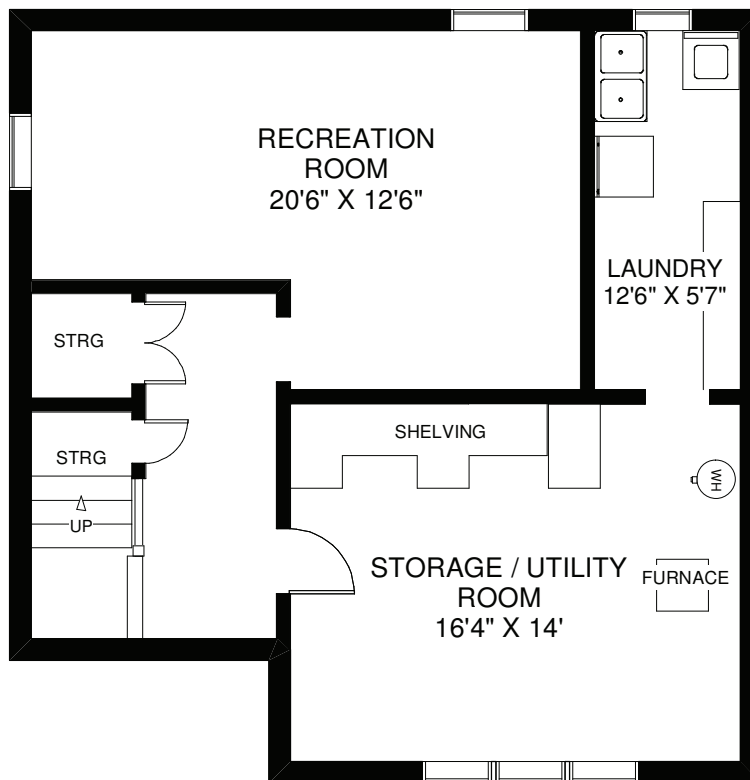


CEILING HT 8'3"

SECOND FLOOR
APPROXIMATELY 815 SQ FT

Note: Measurements & Calculations are approximate. Provided as a guideline only.

53 BABY POINT ROAD



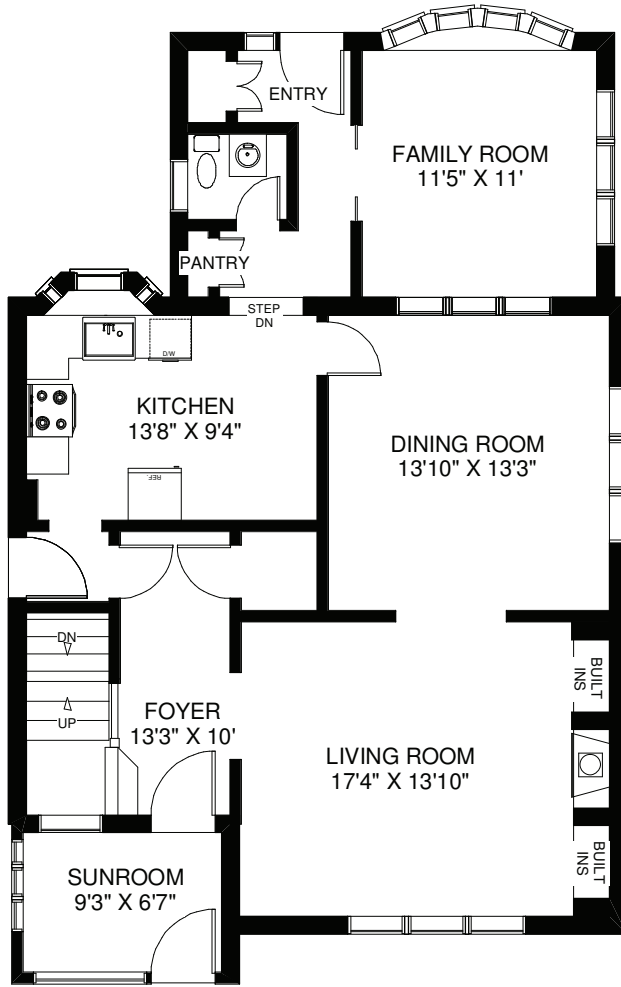
CEILING HT 7'

LOWER FLOOR
APPROXIMATELY 815 SQ FT

Note: Measurements & Calculations are approximate. Provided as a guideline only.

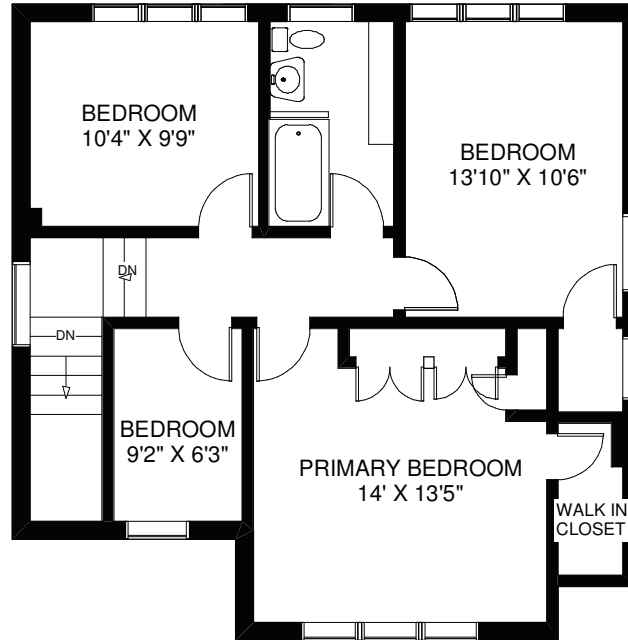
53 BABY POINT ROAD

TOTAL 1,965 SQ FT ABOVE GRADE



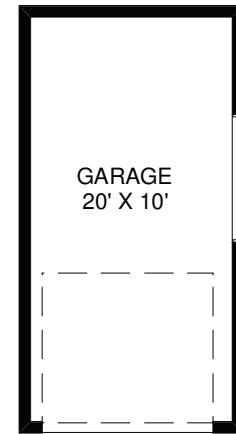
CEILING HT 8'

MAIN FLOOR
APPROXIMATELY 1,150 SQ FT
INCLUDING SUNROOM



CEILING HT 8'3"

SECOND FLOOR
APPROXIMATELY 815 SQ FT



GARAGE
20' X 10'



CEILING HT 7'

LOWER FLOOR
APPROXIMATELY 815 SQ FT

Note: Measurements & Calculations are approximate. Provided as a guideline only.