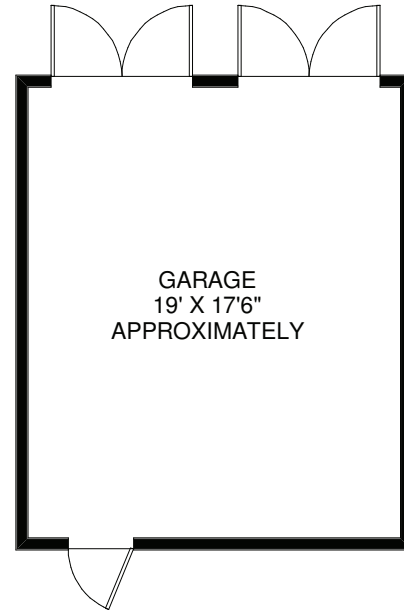
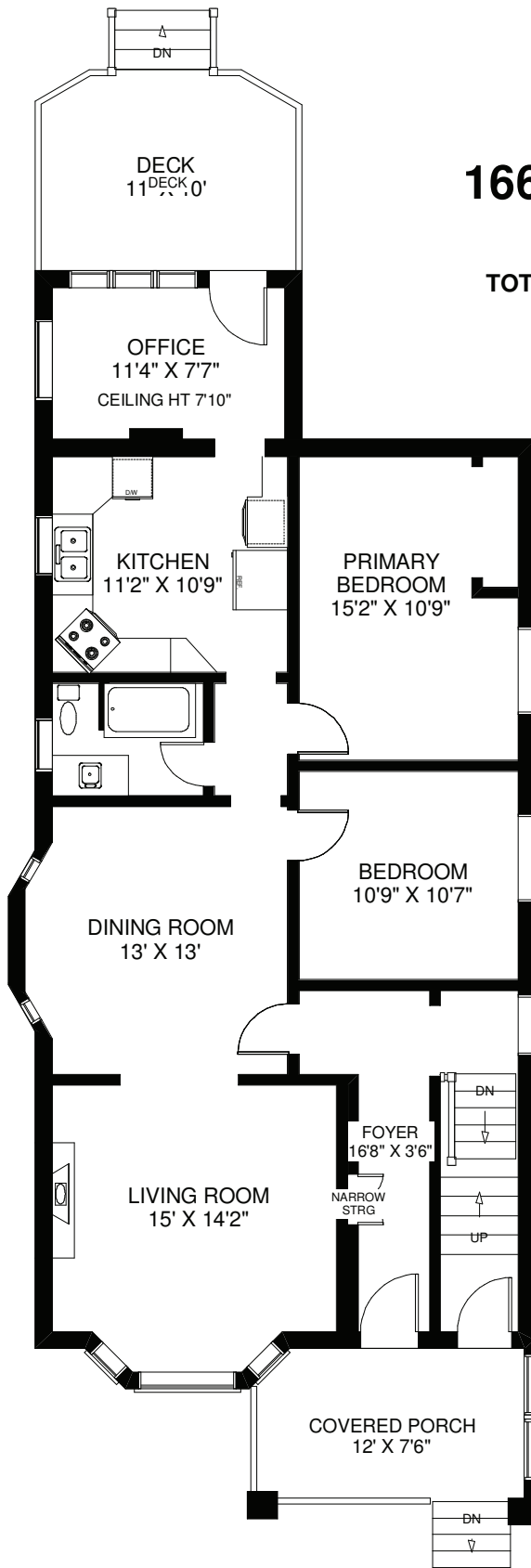


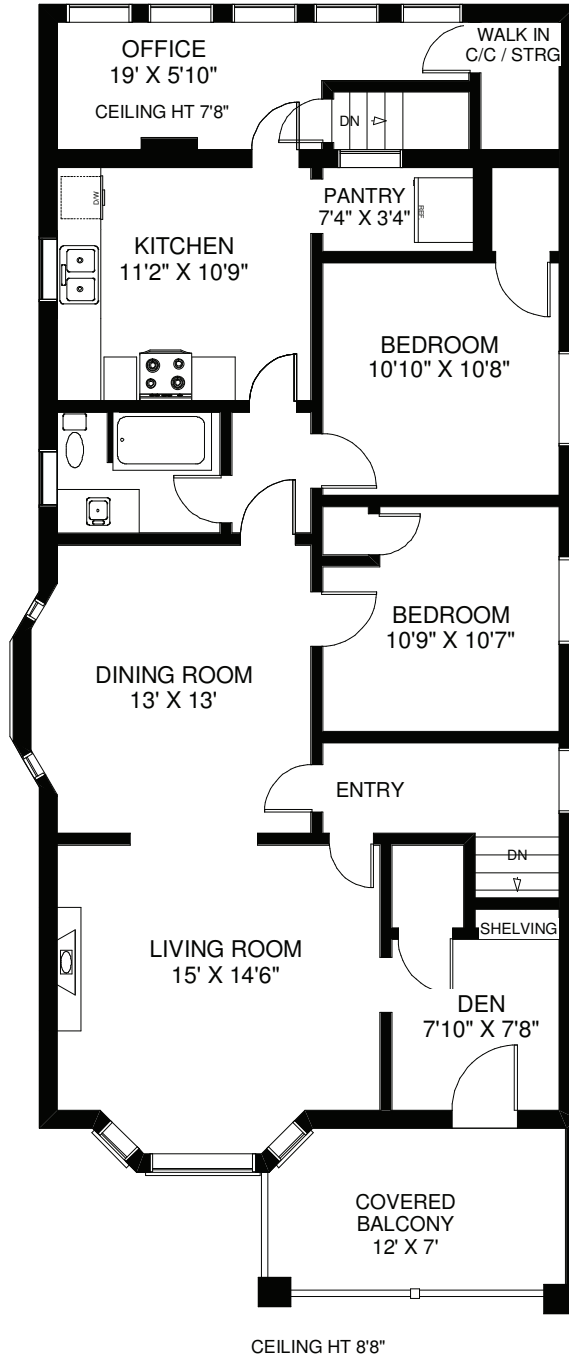
# 166 QUEBEC AVENUE

TOTAL APPROXIMATELY 2,500 SQ FT  
ABOVE GRADE



MAIN FLOOR  
APPROXIMATELY 1,240 SQ FT

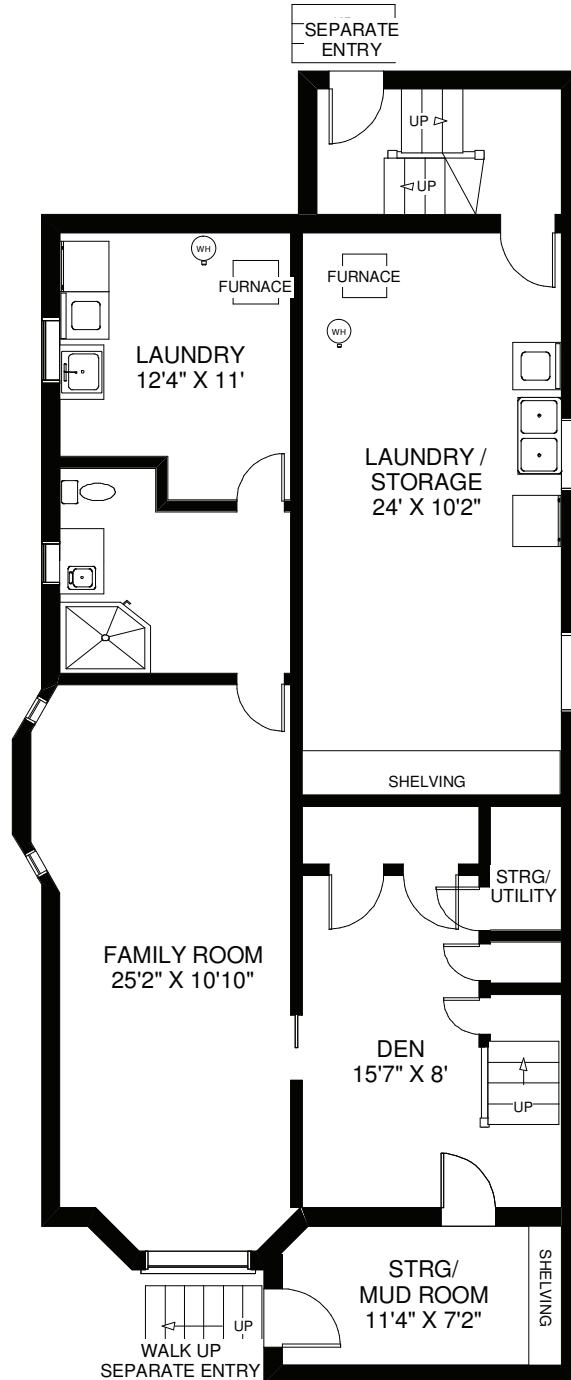
**166 QUEBEC AVENUE**



**SECOND FLOOR**  
APPROXIMATELY 1,300 SQ FT

Note: Measurements & Calculations are approximate. Provided as a guideline only.

**166 QUEBEC AVENUE**



CEILING HT 7'

**LOWER FLOOR**  
APPROXIMATELY 1,340 SQ FT

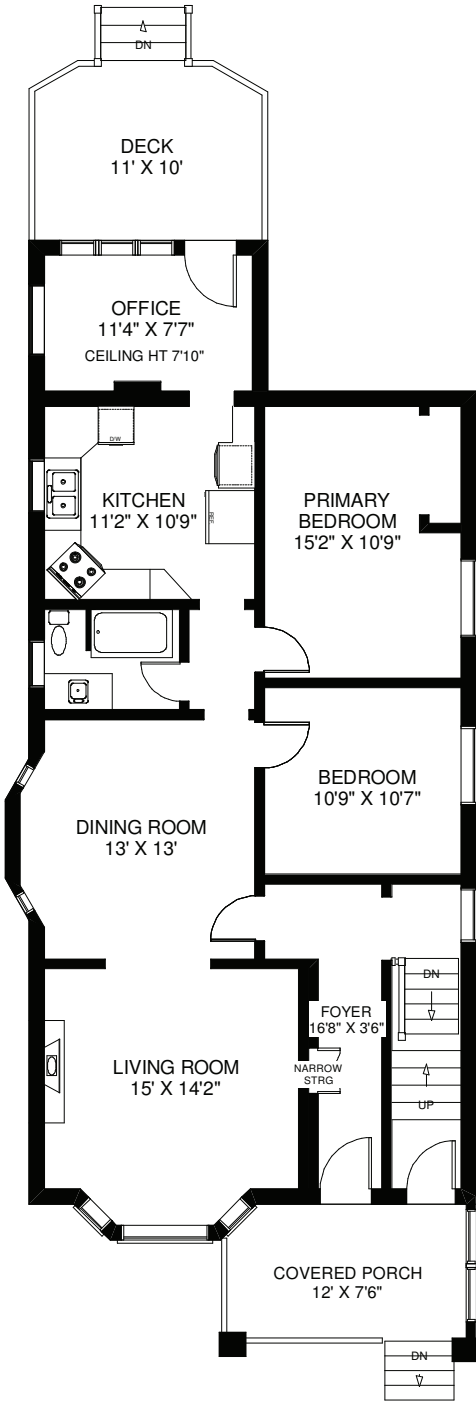
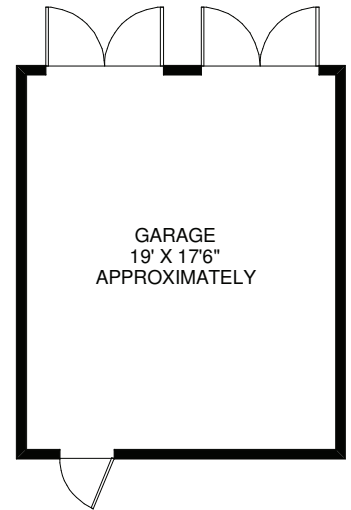
Note: Measurements & Calculations are approximate. Provided as a guideline only.

# BABIAK

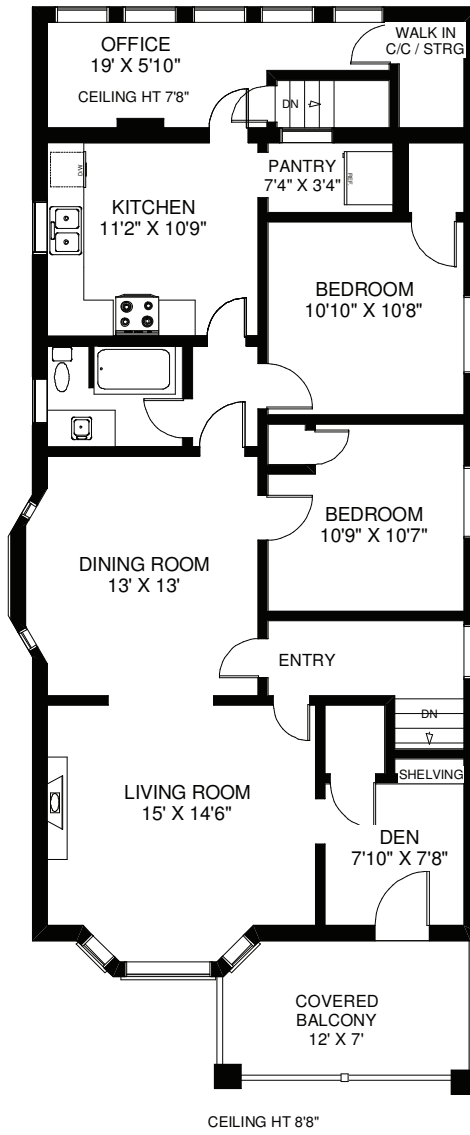
TEAM REAL ESTATE

## 166 QUEBEC AVENUE

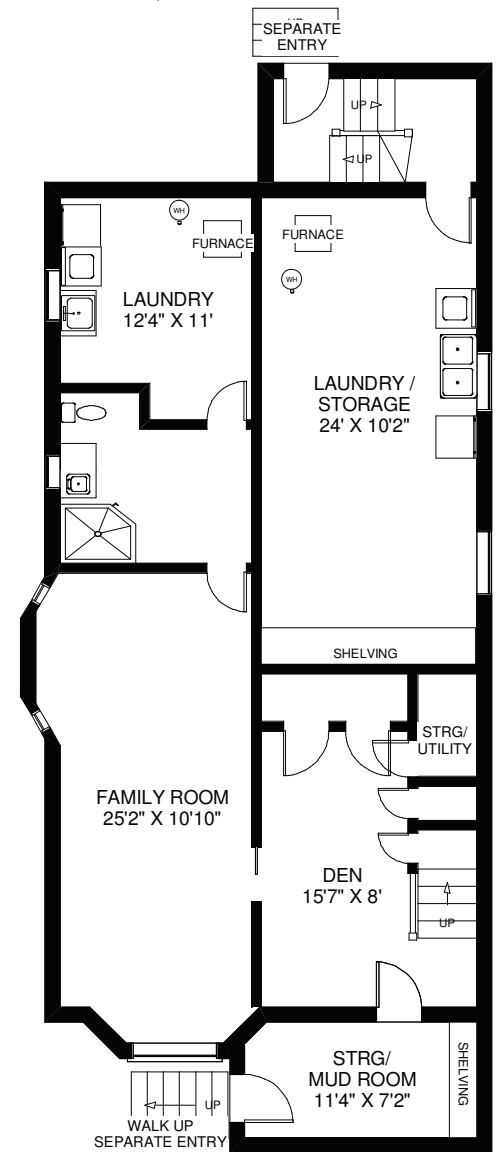
TOTAL APPROXIMATELY 2,500 SQ FT  
ABOVE GRADE



MAIN FLOOR  
APPROXIMATELY 1,240 SQ FT



SECOND FLOOR  
APPROXIMATELY 1,300 SQ FT



LOWER FLOOR  
APPROXIMATELY 1,340 SQ FT

Note: Measurements & Calculations are approximate. Provided as a guideline only.