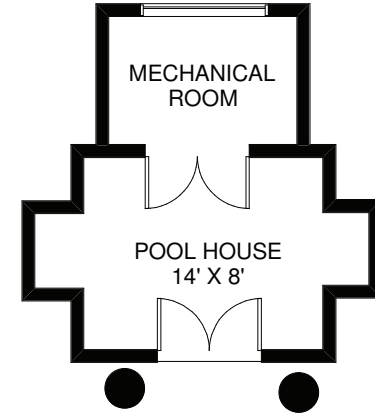
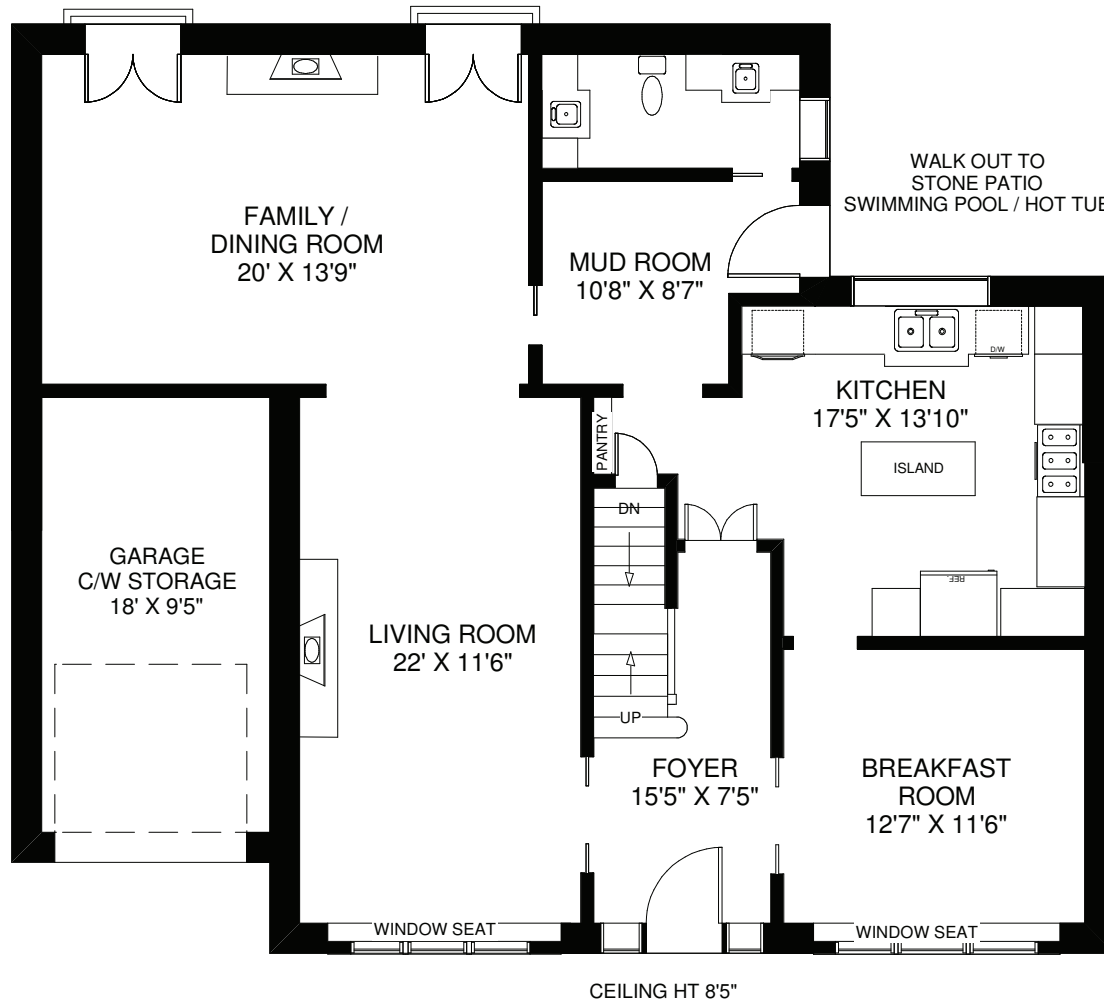


## 82 HUMBERVIEW ROAD

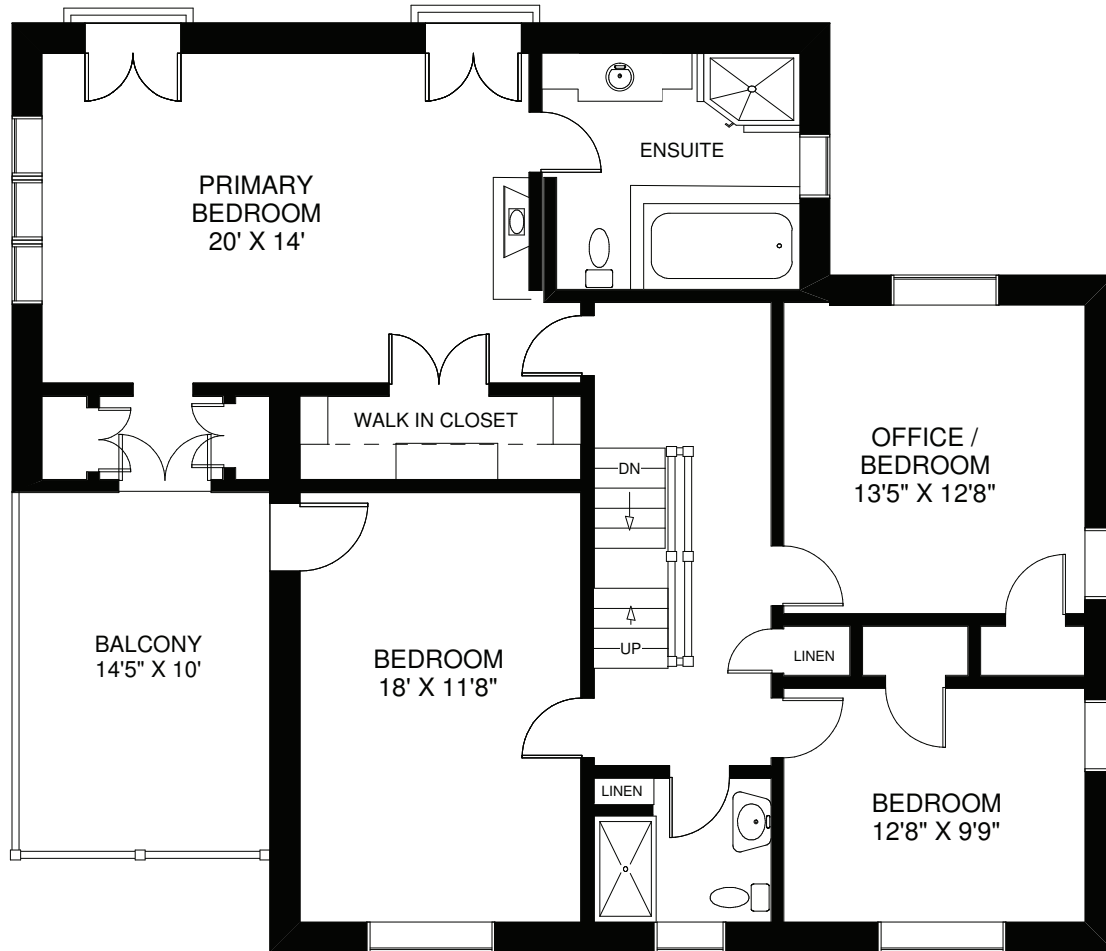
ABOVE GRADE APPROXIMATELY 4,000 SQ FT ABOVE GRADE



**MAIN FLOOR**  
APPROXIMATELY 1,400 SQ FT

Note: Measurements & Calculations are approximate. Provided as a guideline only.

## 82 HUMBERVIEW ROAD

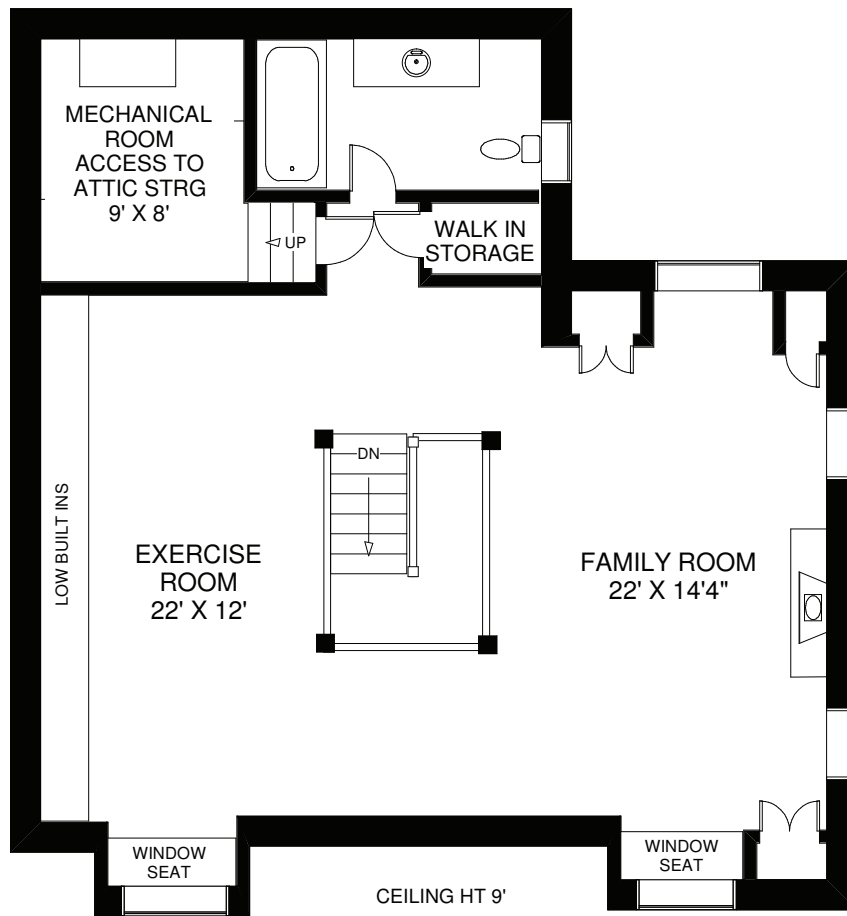


CEILING HT 8'

**SECOND FLOOR**  
**APPROXIMATELY 1,450 SQ FT**

Note: Measurements & Calculations are approximate. Provided as a guideline only.

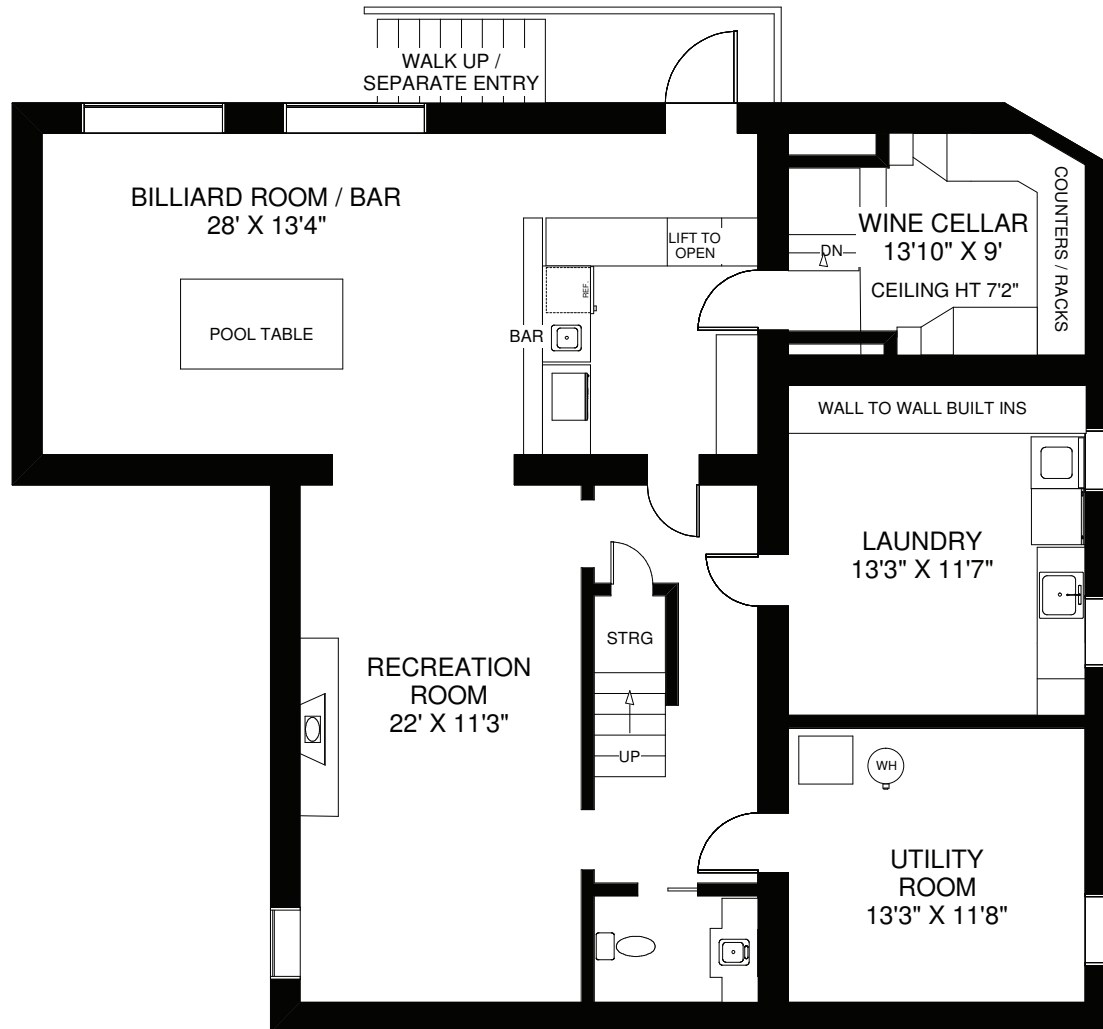
## 82 HUMBERVIEW ROAD



**THIRD FLOOR**  
**APPROXIMATELY 1,150 SQ FT**

Note: Measurements & Calculations are approximate. Provided as a guideline only.

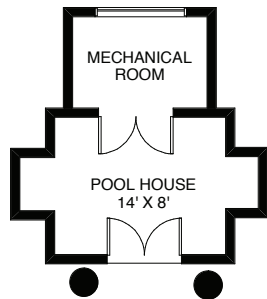
## 82 HUMBERVIEW ROAD



CEILING HT 7'

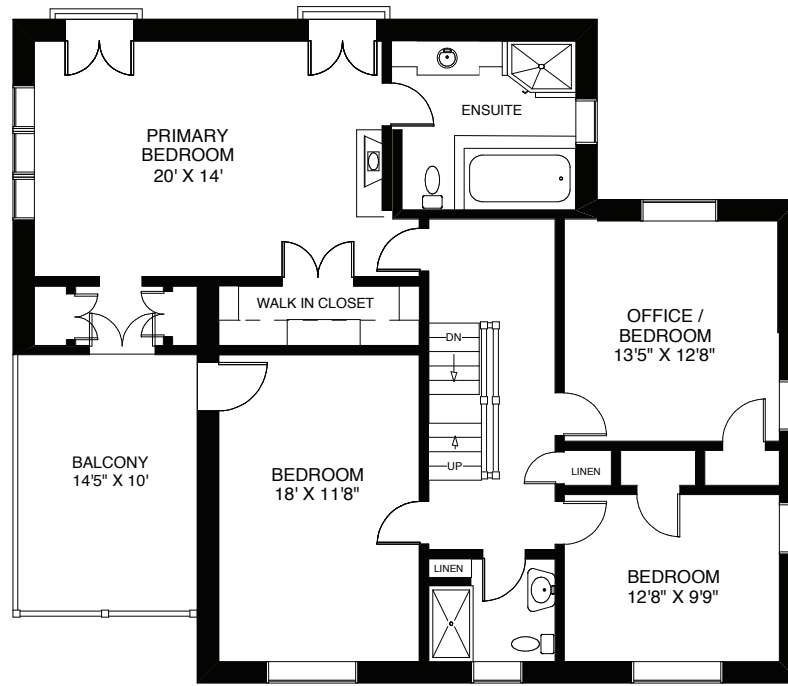
LOWER FLOOR  
APPROXIMATELY 1,525 SQ FT

Note: Measurements & Calculations are approximate. Provided as a guideline only.

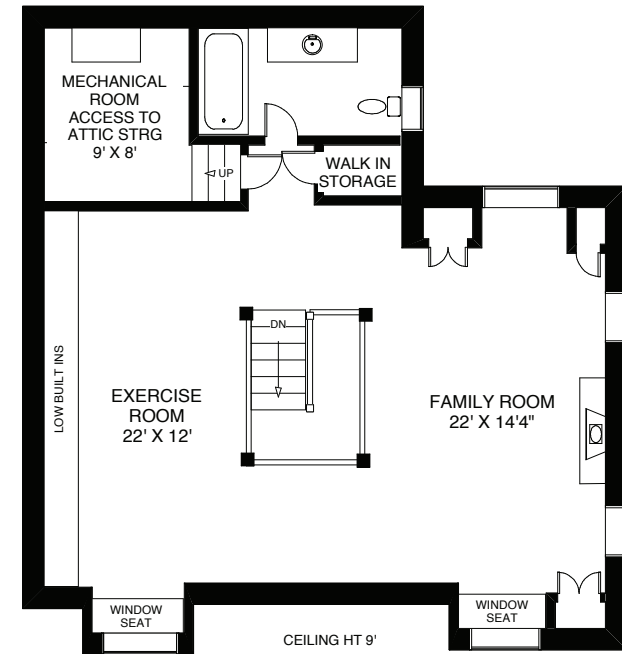


## 82 HUMBERVIEW ROAD

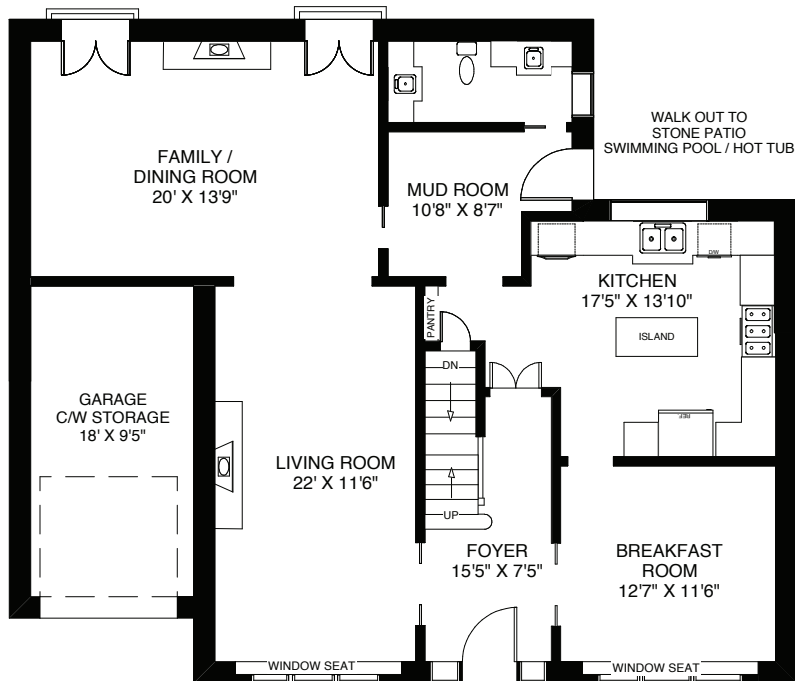
ABOVE GRADE APPROXIMATELY 4,000 SQ FT ABOVE GRADE



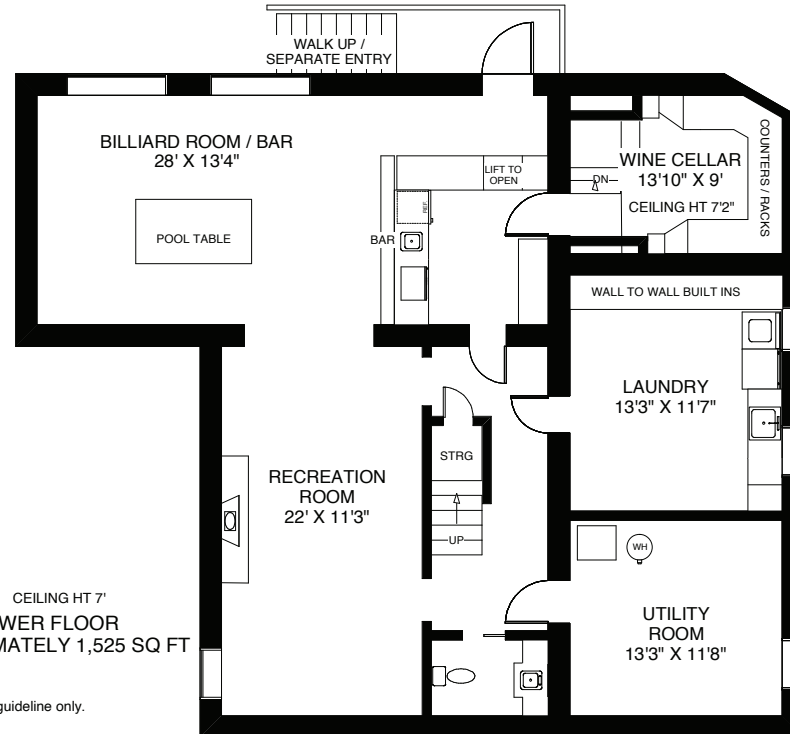
SECOND FLOOR  
APPROXIMATELY 1,450 SQ FT



THIRD FLOOR  
APPROXIMATELY 1,150 SQ FT



MAIN FLOOR  
APPROXIMATELY 1,400 SQ FT



LOWER FLOOR  
APPROXIMATELY 1,525 SQ FT

**BABIAK**  
TEAM REAL ESTATE

Note: Measurements & Calculations are approximate. Provided as a guideline only.

Main Fl	1,400
2nd Fl	1,450
3rd Fl	1,150
Lower Fl	1,525
Above Grade	4,000
<b>Total</b>	<b>5,525</b>