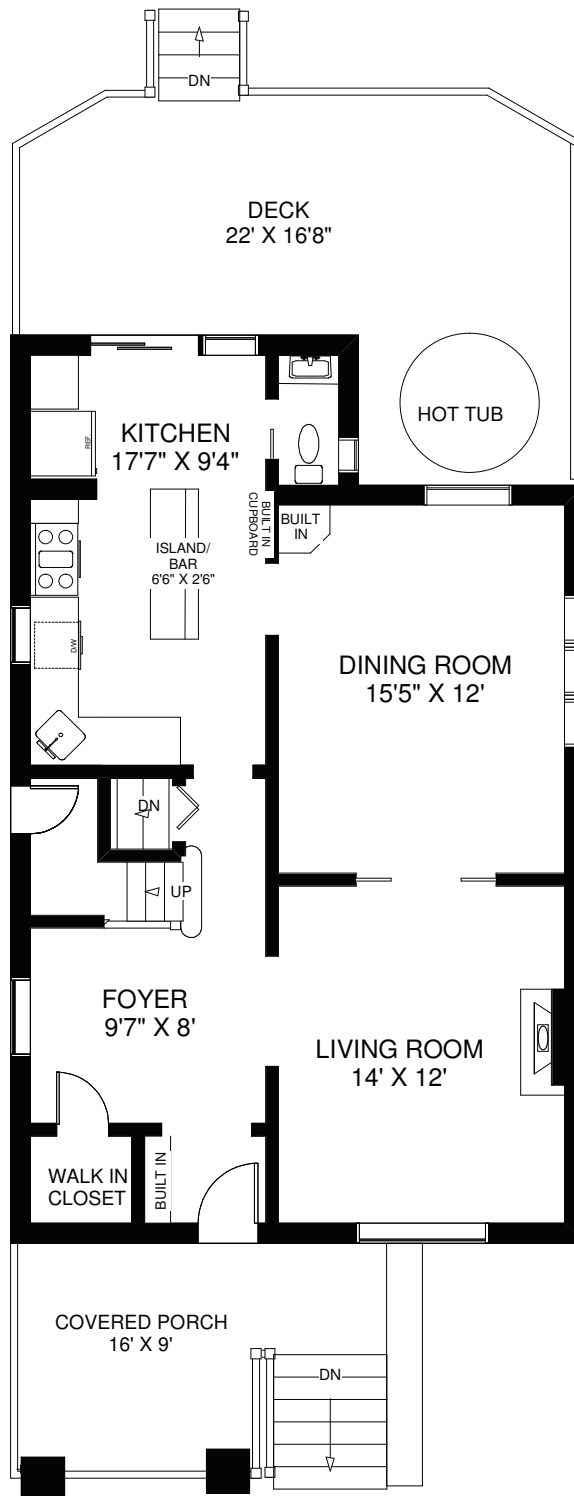


60 HEWITT AVENUE

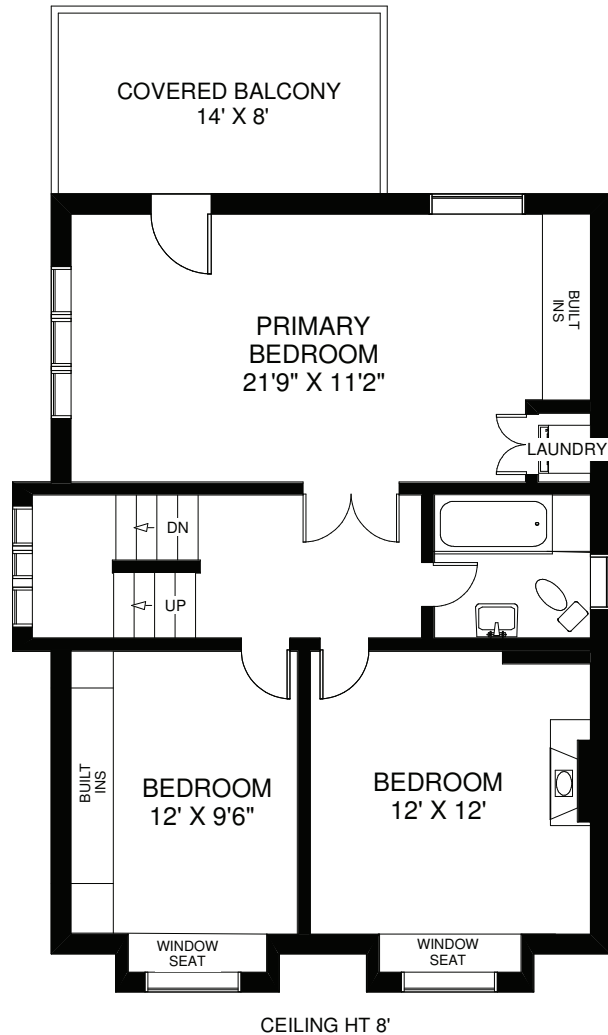


CEILING HT 8'9"

MAIN FLOOR
APPROXIMATELY 845 SQ FT

Note: Measurements & Calculations are approximate. Provided as a guideline only.

60 HEWITT AVENUE

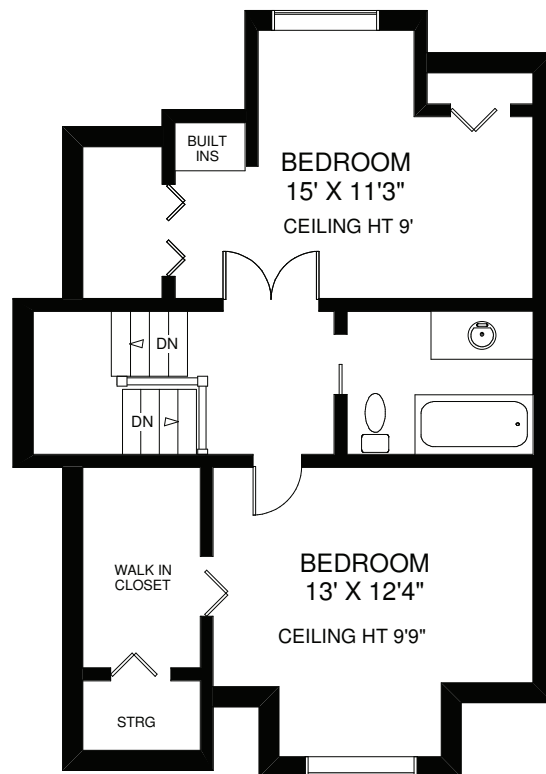


CEILING HT 8'
SECOND FLOOR
APPROXIMATELY 760 SQ FT

Note: Measurements & Calculations are approximate. Provided as a guideline only.



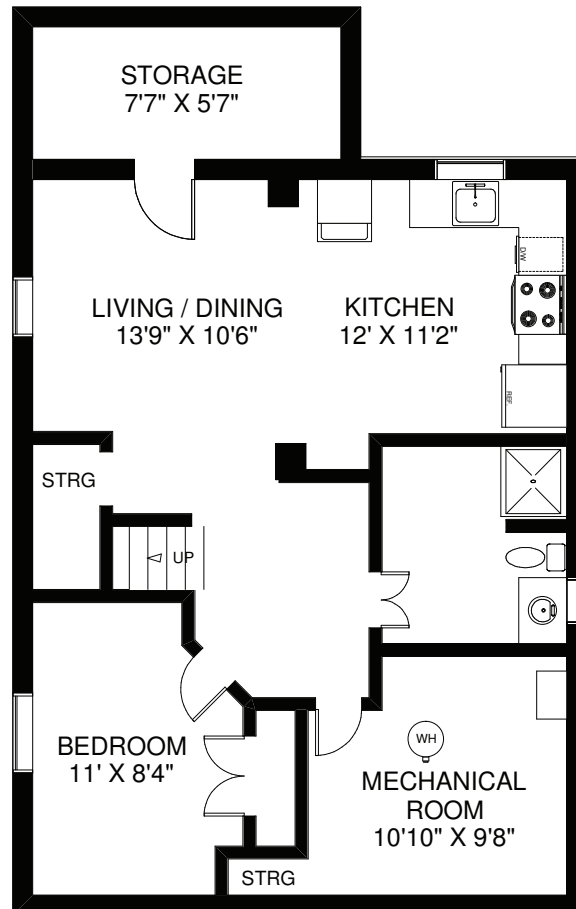
60 HEWITT AVENUE



THIRD FLOOR
APPROXIMATELY 600 SQ FT

Note: Measurements & Calculations are approximate. Provided as a guideline only.

60 HEWITT AVENUE

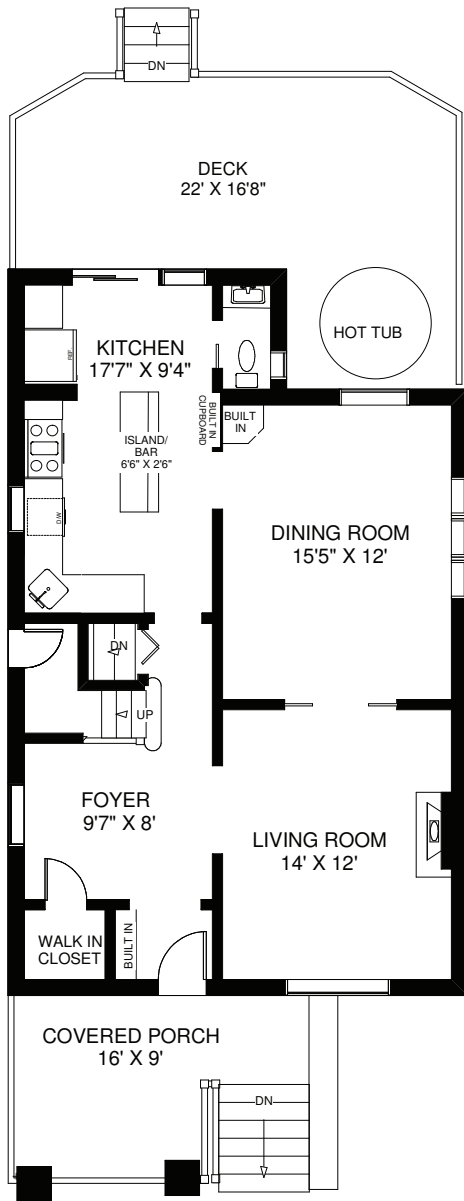


CEILING HT 6'10"

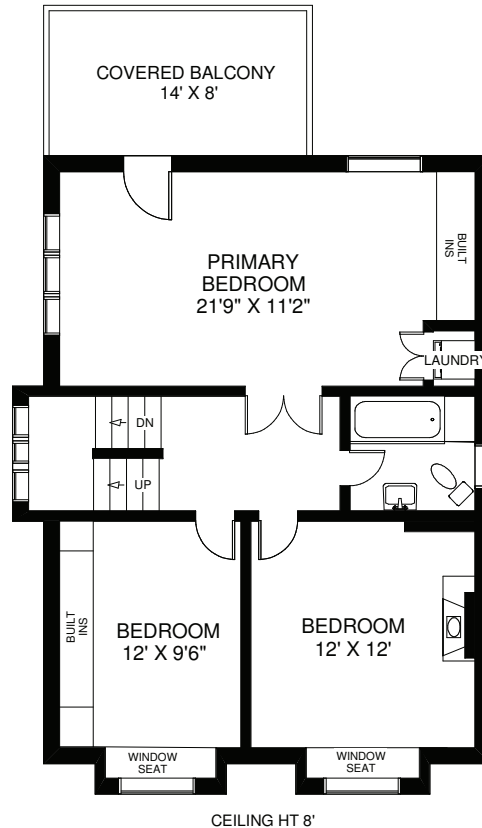
LOWER FLOOR
APPROXIMATELY 845 SQ FT

Note: Measurements & Calculations are approximate. Provided as a guideline only.

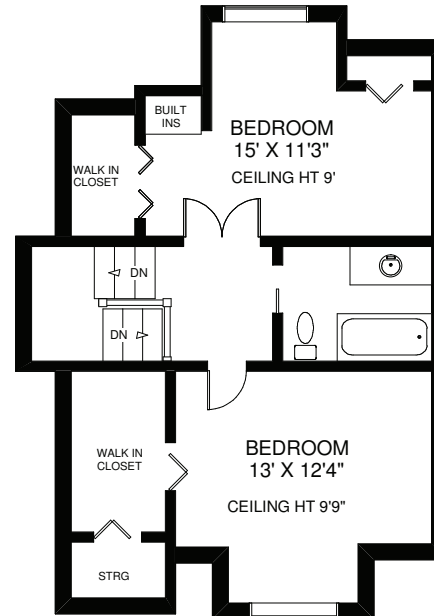
60 HEWITT AVENUE



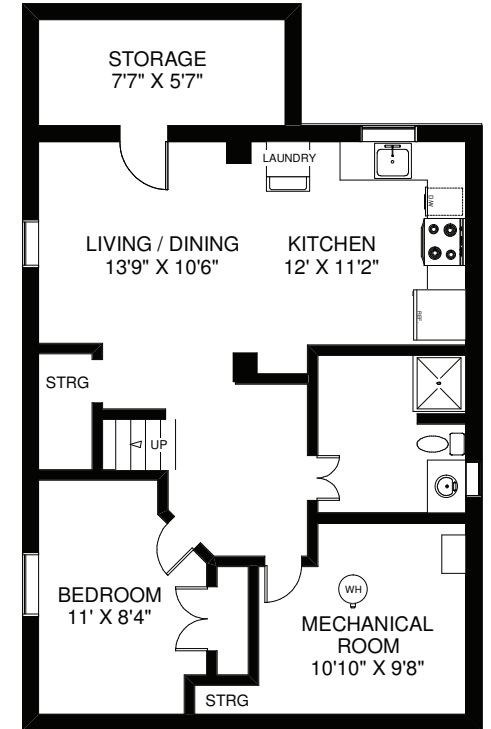
MAIN FLOOR
APPROXIMATELY 845 SQ FT



SECOND FLOOR
APPROXIMATELY 760 SQ FT



THIRD FLOOR
APPROXIMATELY 600 SQ FT



LOWER FLOOR
APPROXIMATELY 845 SQ FT

Note: Measurements & Calculations are approximate. Provided as a guideline only.