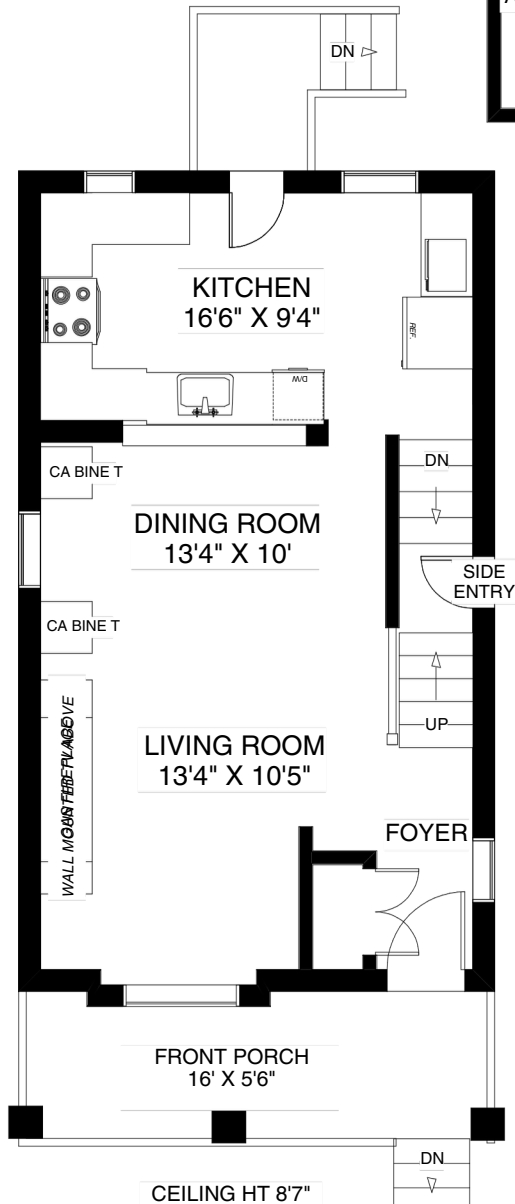
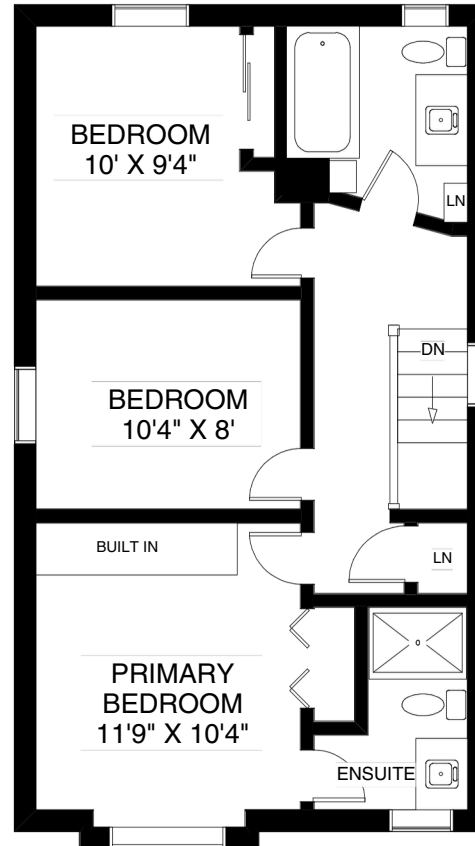
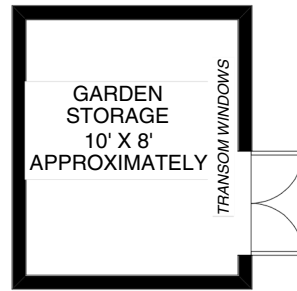


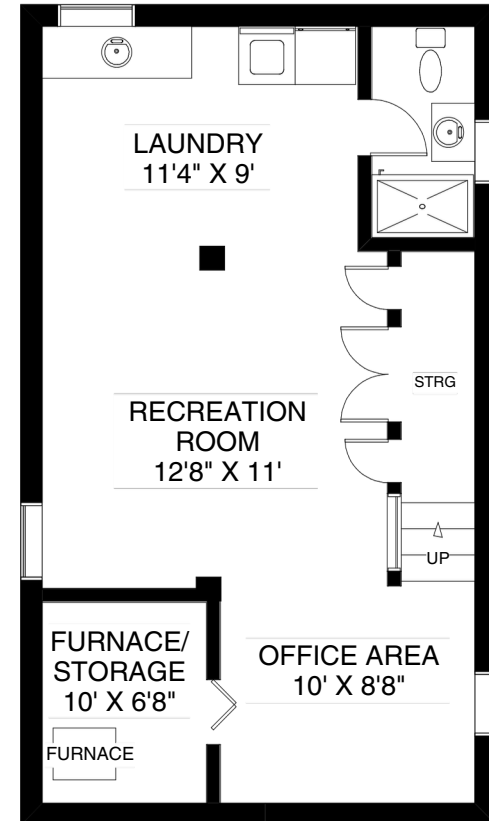
TOTAL APPROXIMATELY 1,755 SQ FT
ABOVE GRADE



MAIN FLOOR
APPROXIMATELY 585 SQ FT



CEILING HT 8'
SECOND FLOOR
APPROXIMATELY 585 SQ FT



CEILING HT 6'10"
LOWER FLOOR
APPROXIMATELY 585 SQ FT

Note: Measurements & Calculations are approximate. Provided as a guideline only.