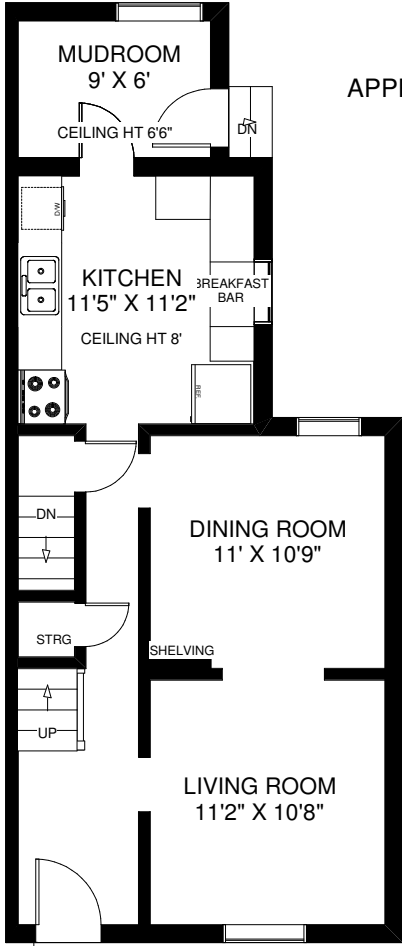
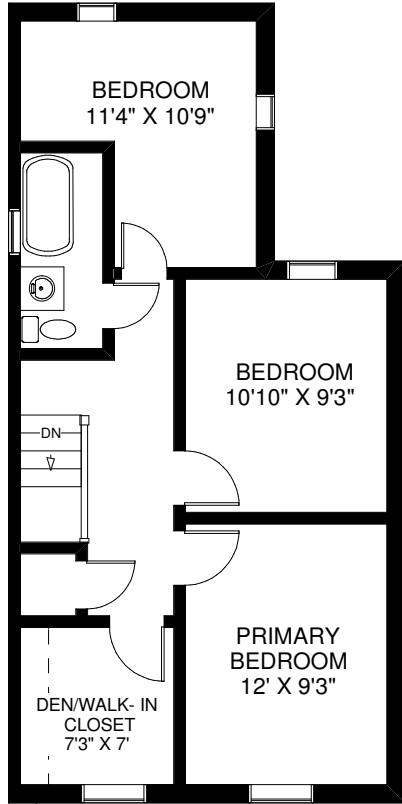


# 45 MONTYE AVENUE

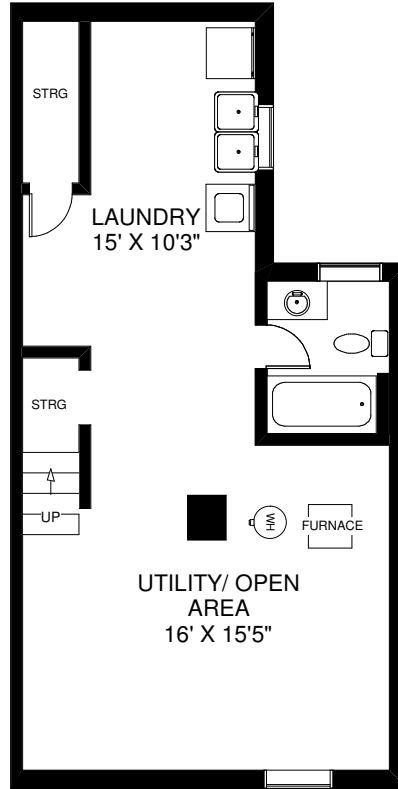


APPROXIMATELY 1,255 SQ FT ABOVE GRADE

CEILING HT 8'5"  
MAIN FLOOR  
APPROXIMATELY 655 SQ FT

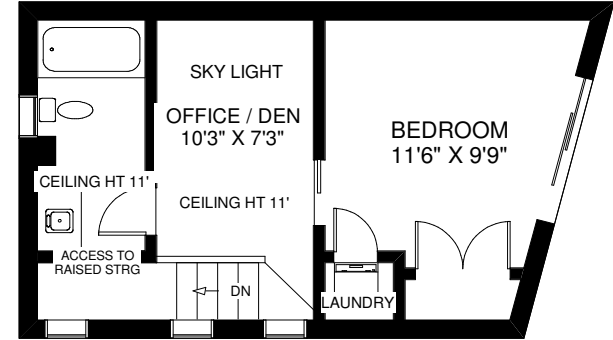


CEILING HT 8"  
SECOND FLOOR  
APPROXIMATELY 600 SQ FT

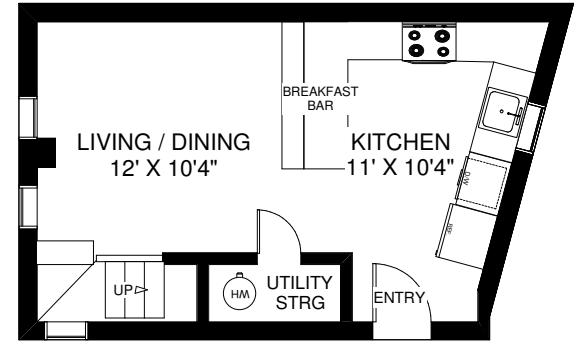


CEILING HT 6'5"  
LOWER FLOOR  
APPROXIMATELY 600 SQ FT

APPROXIMATELY 760 SQ FT ABOVE GRADE



GARDEN SUITE UPPER FLOOR  
APPROXIMATELY 385 SQ FT



CEILING HT 8"  
GARDEN SUITE MAIN FLOOR  
APPROXIMATELY 375 SQ FT

Note: Measurements & Calculations are approximate. Provided as a guideline only.