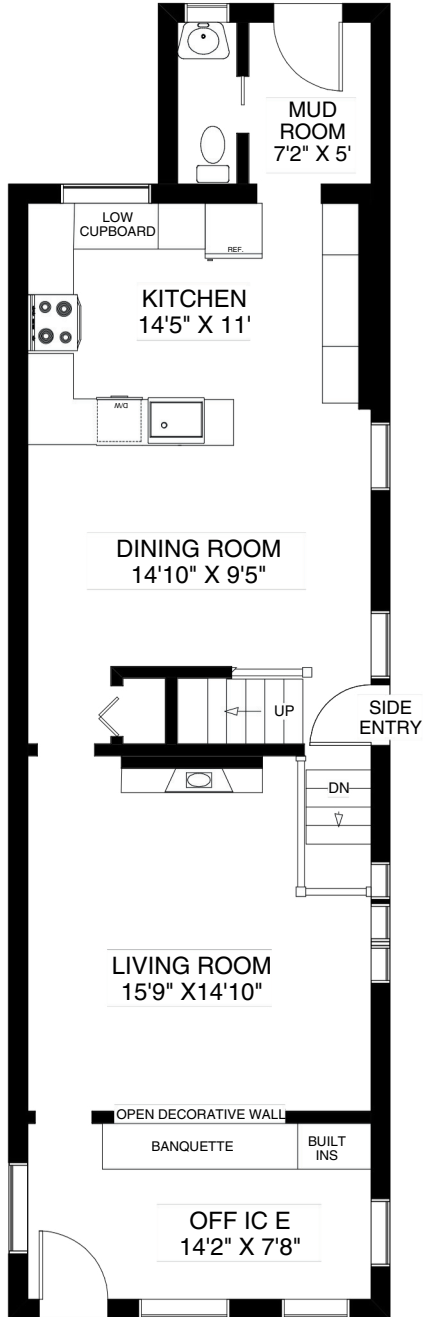


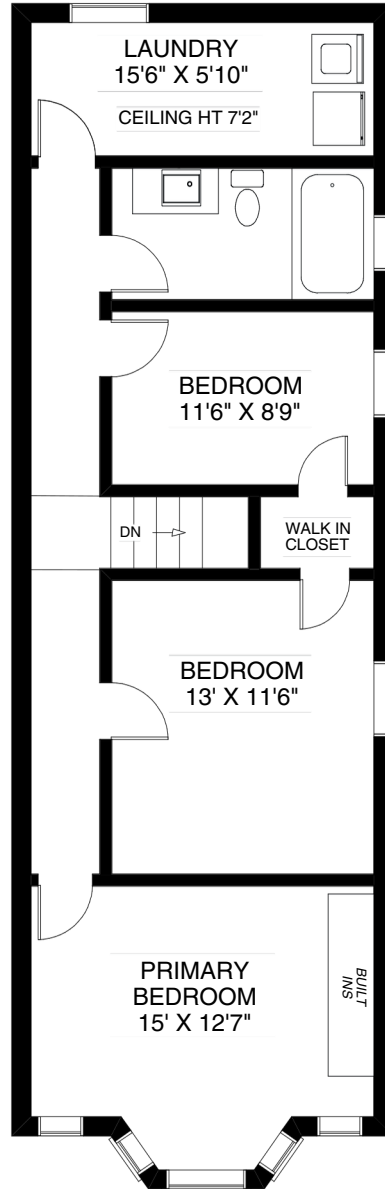
530 RUNNYMEDE ROAD

TOTAL APPROXIMATELY 1,735 SQ FT ABOVE GRADE

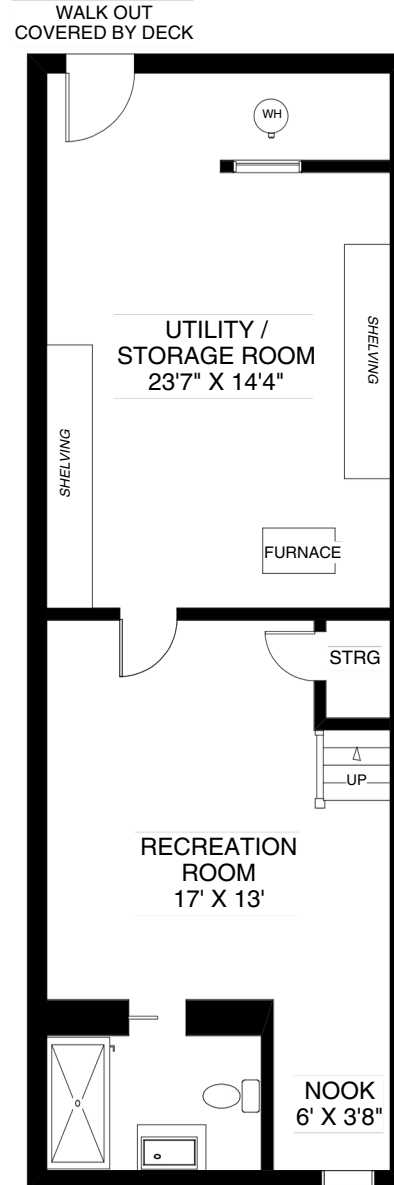
BABIAK
TEAM REAL ESTATE



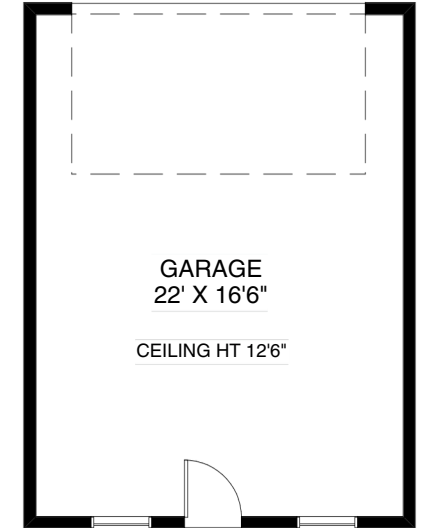
MAIN FLOOR
APPROXIMATELY 900 SQ FT



SECOND FLOOR
APPROXIMATELY 835 SQ FT



LOWER FLOOR
APPROXIMATELY 825 SQ FT



Note: Measurements & Calculations are approximate.
Provided as a guideline only.