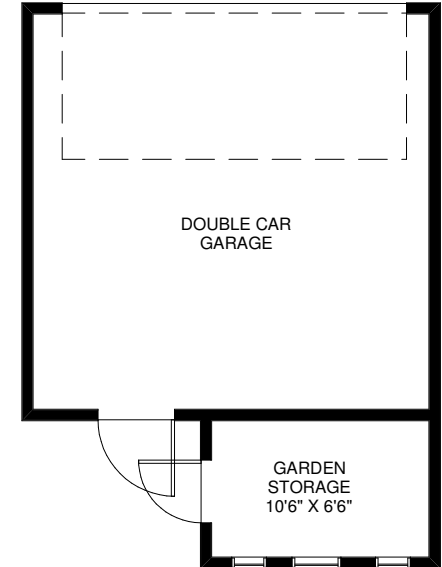
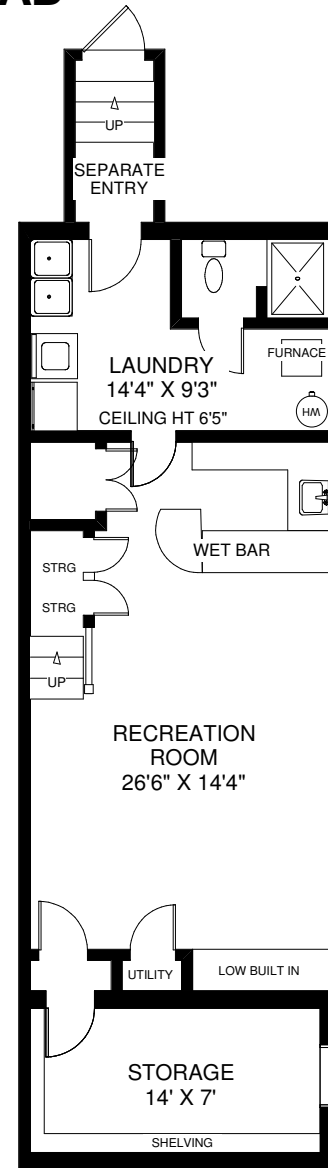
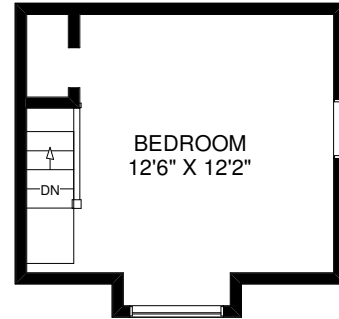
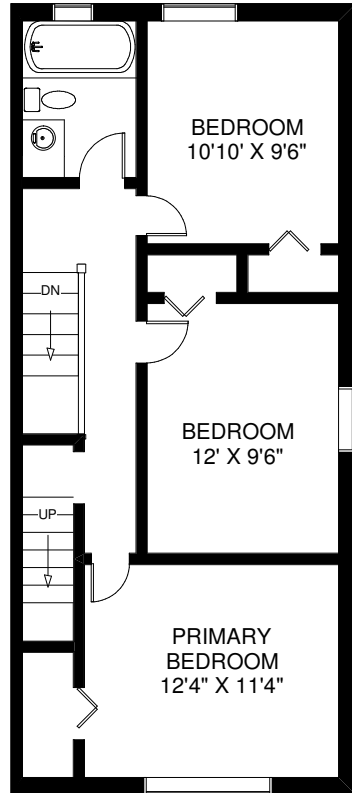
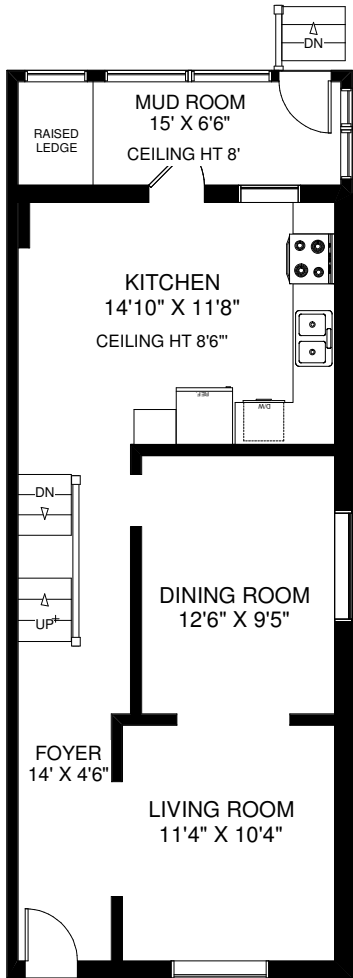


# 582 RUNNYMEDE ROAD

TOTAL APPROXIMATELY 1,555 SQ FT ABOVE GRADE



CEILING HT 8'8"  
MAIN FLOOR  
APPROXIMATELY 715 SQ FT  
(INCLUDING MUD ROOM)

CEILING HT 8'4"  
SECOND FLOOR  
APPROXIMATELY 620 SQ FT

CEILING HT 7'3"  
THIRD FLOOR  
APPROXIMATELY 220 SQ FT

CEILING HT 7'1"  
LOWER FLOOR  
APPROXIMATELY 750 SQ FT

Note: Measurements & Calculations are approximate. Provided as a guideline only.