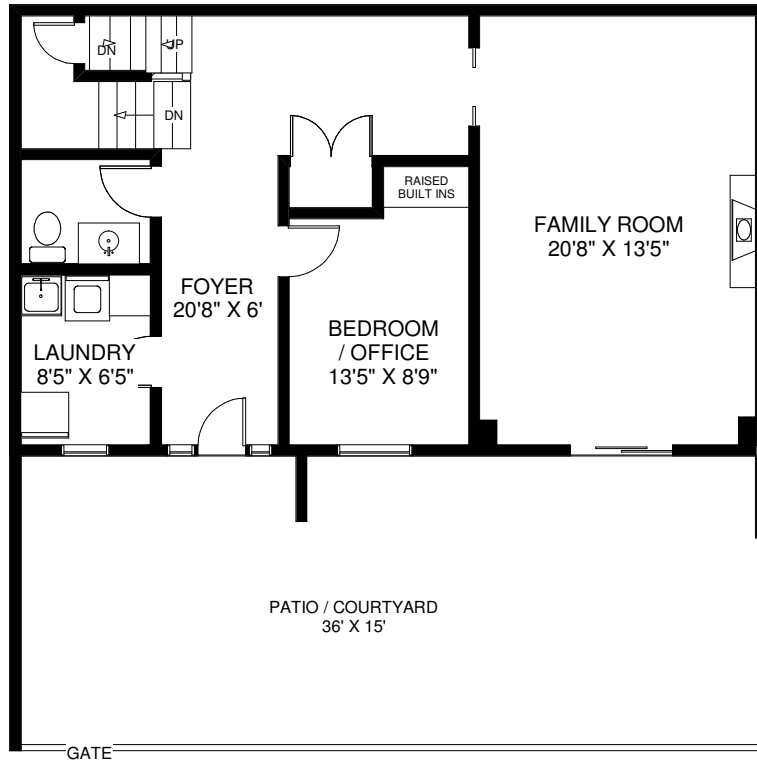
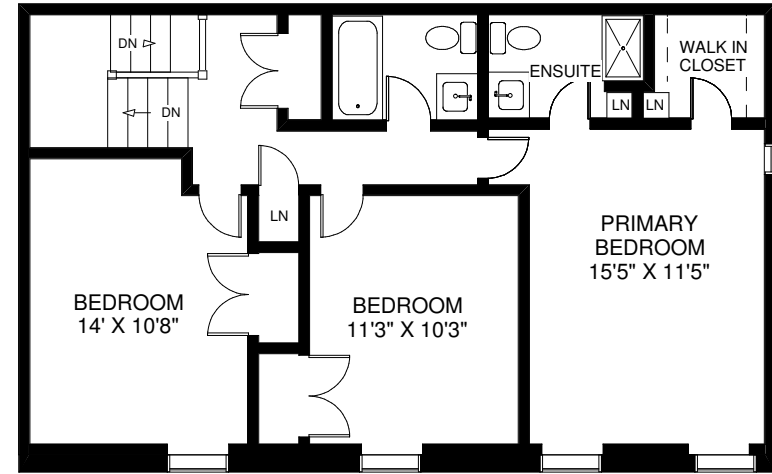


22 LA ROSE AVENUE TH # 7

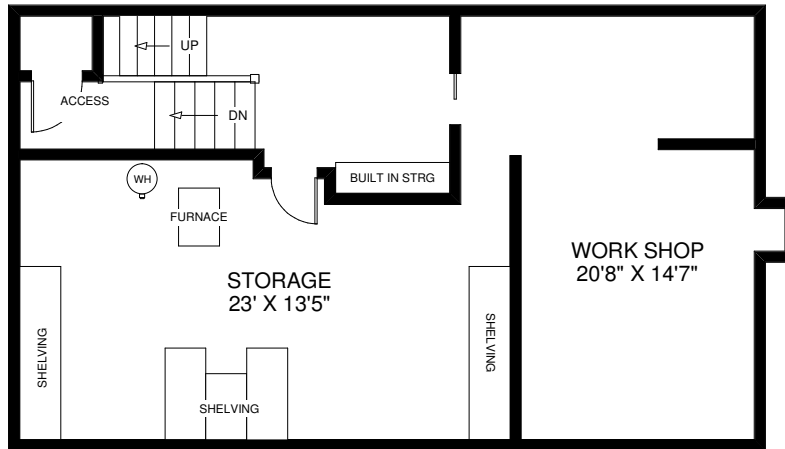
APPROXIMATELY 2,409 SQ FT ABOVE GRADE



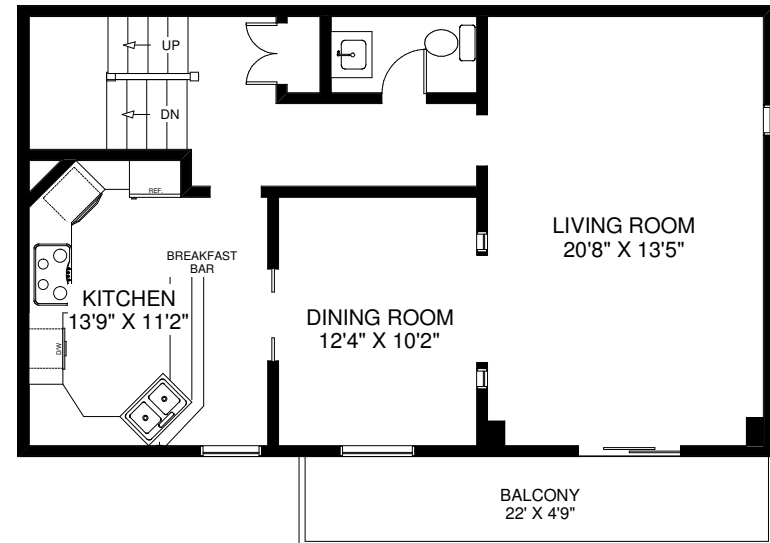
CEILING HT 8'
MAIN LEVEL
 APPROXIMATELY 817 SQ FT



CEILING HT 8'
THIRD LEVEL
 APPROXIMATELY 812 SQ FT



CEILING HT 8'
LOWER LEVEL
 APPROXIMATELY 817 SQ FT



CEILING HT 8'
SECOND LEVEL
 APPROXIMATELY 827 SQ FT

Note: Measurements & Calculations are approximate. Provided as a guideline only.