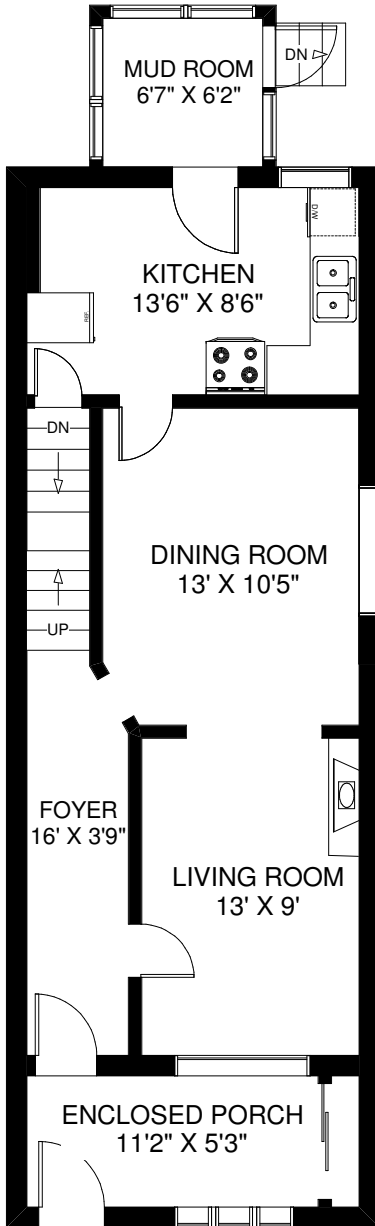


31 RUNNYMEDE ROAD

TOTAL APPROXIMATELY 1,260 SQ FT ABOVE GRADE

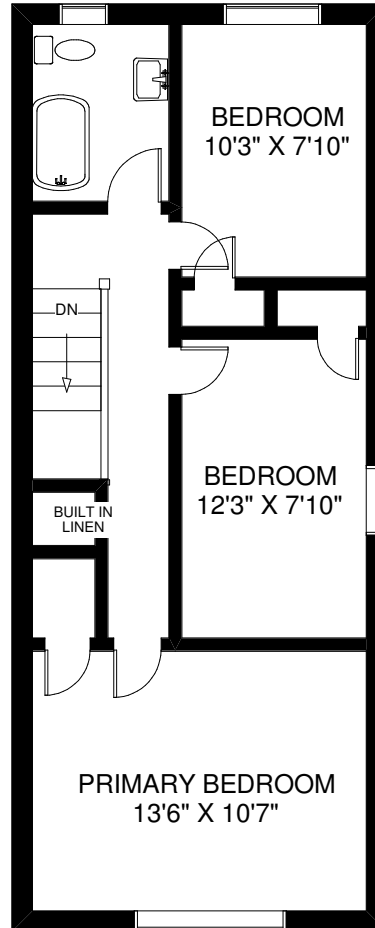


CEILING HT 8'5"

MAIN FLOOR

APPROXIMATELY 700 SQ FT

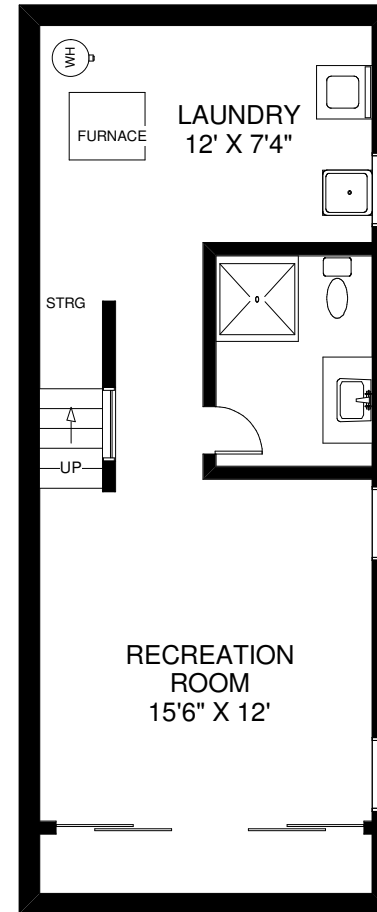
(INCLUDING ENCLOSED PORCH/ MUD ROOM)



CEILING HT 8'

SECOND FLOOR

APPROXIMATELY 560 SQ FT



CEILING HT 6'4"

LOWER FLOOR

APPROXIMATELY 560 SQ FT

