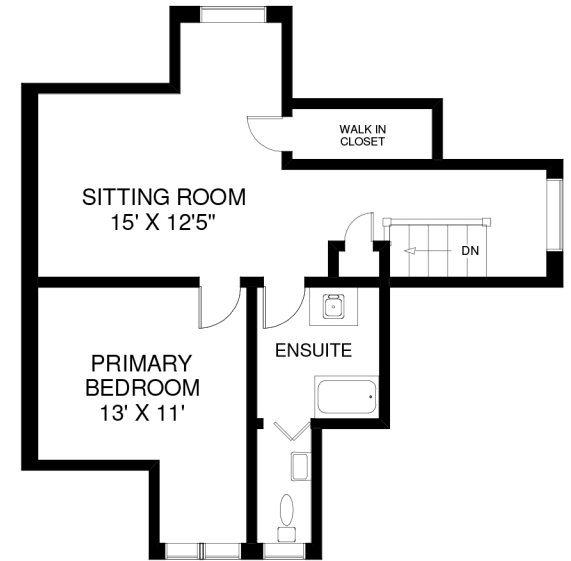
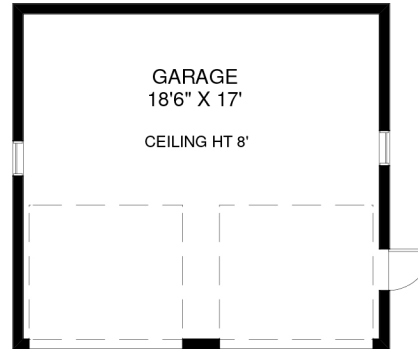
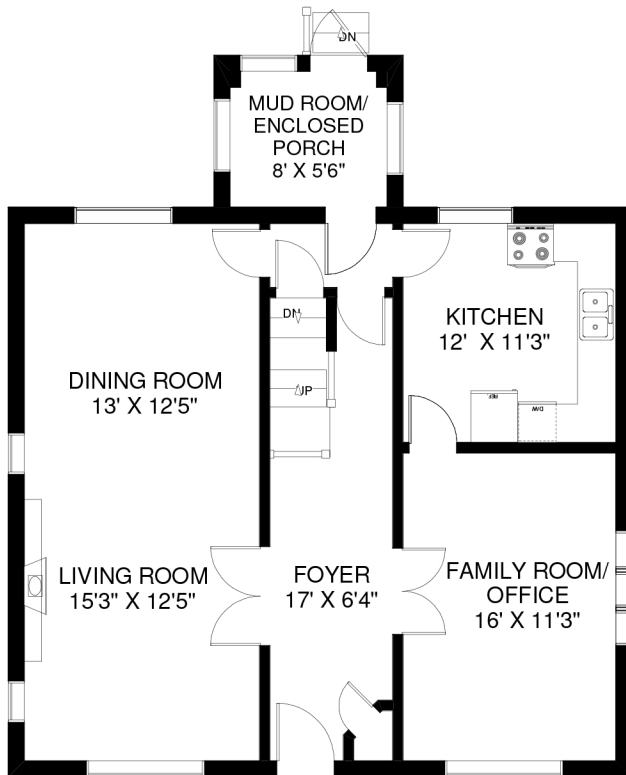


348 RUNNYMEDE ROAD

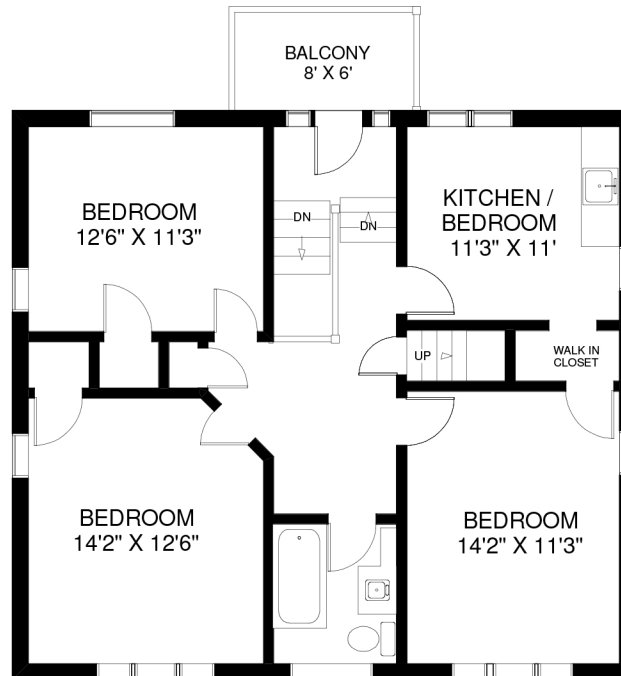
APPROXIMATELY 2,430 SQ FT ABOVE GRADE



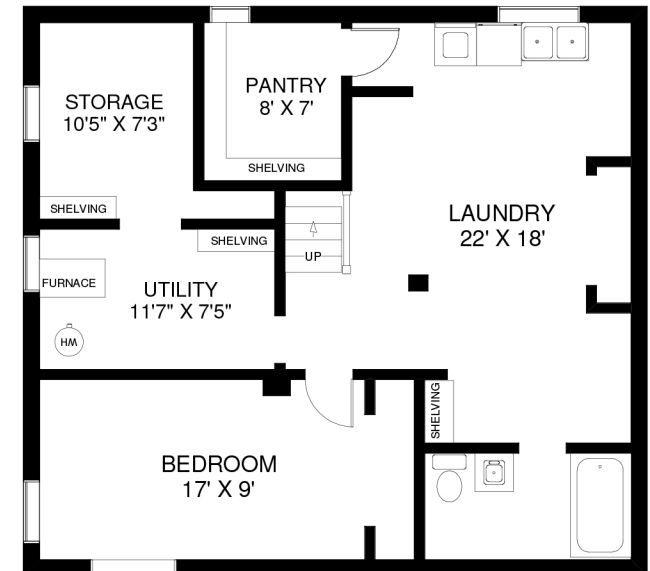
CEILING HT 7'
THIRD FLOOR
APPROXIMATELY 500 SQ FT



CEILING HT 8'5"
MAIN FLOOR
APPROXIMATELY 965 SQ FT



CEILING HT 8'5"
SECOND FLOOR
APPROXIMATELY 965 SQ FT



CEILING HT 7'
LOWER FLOOR
APPROXIMATELY 965 SQ FT