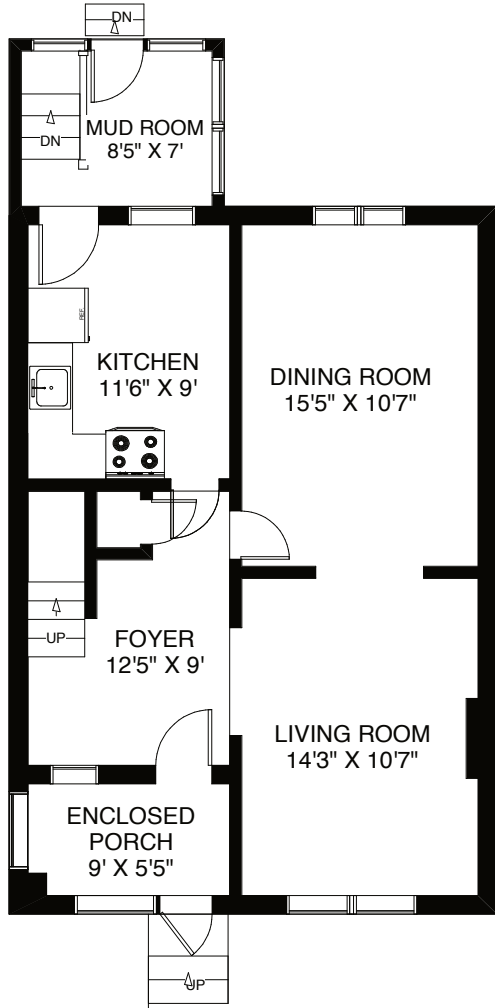


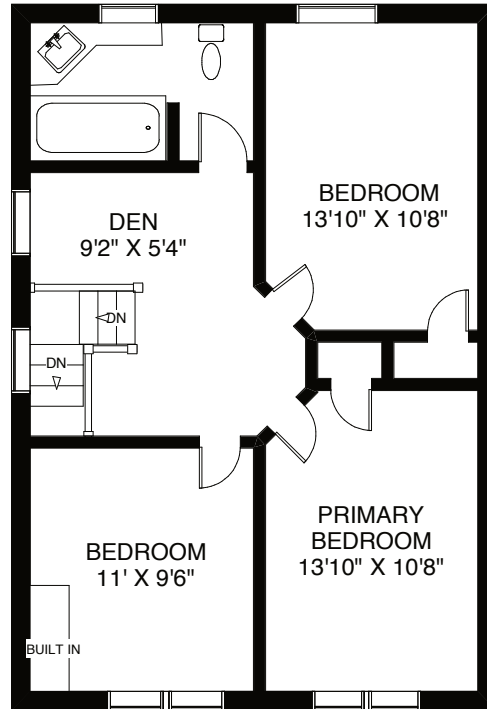
# 32 Radford Avenue

APPROXIMATELY 1,450 SQ FT ABOVE GRADE



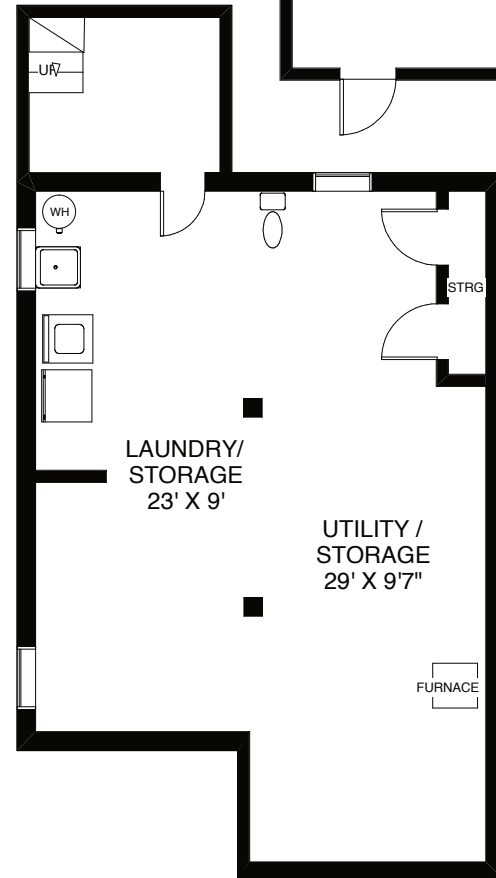
CEILING HT 8'

**MAIN FLOOR**  
APPROXIMATELY 760 SQ FT  
(INCLUDING ENCLOSED PORCH)



CEILING HT 7'10"

**SECOND FLOOR**  
APPROXIMATELY 690 SQ FT



CEILING HT 6'9"

**LOWER FLOOR**  
APPROXIMATELY 700 SQ FT

