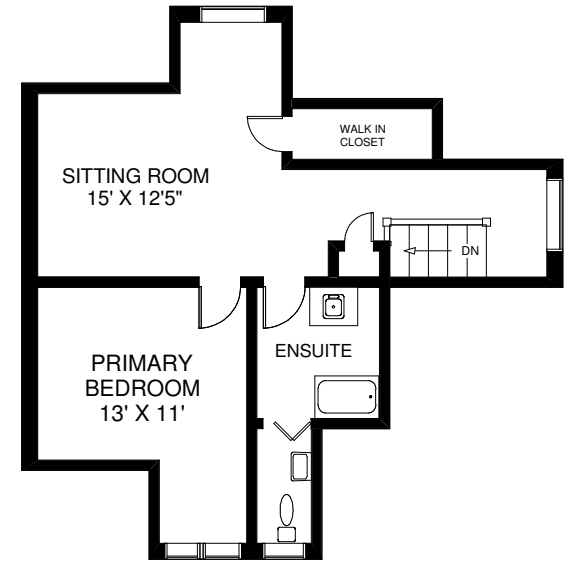
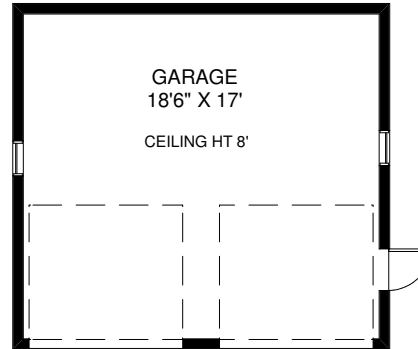
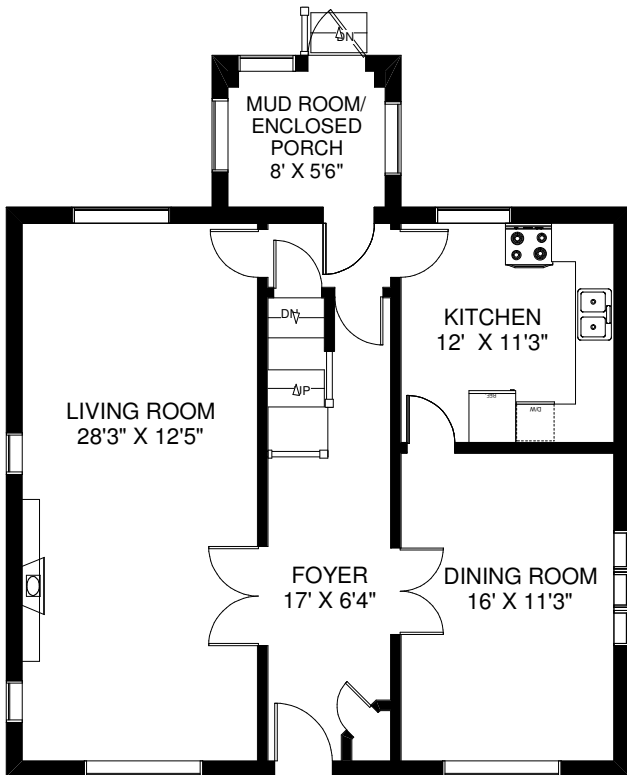


# 348 RUNNYMEDE ROAD

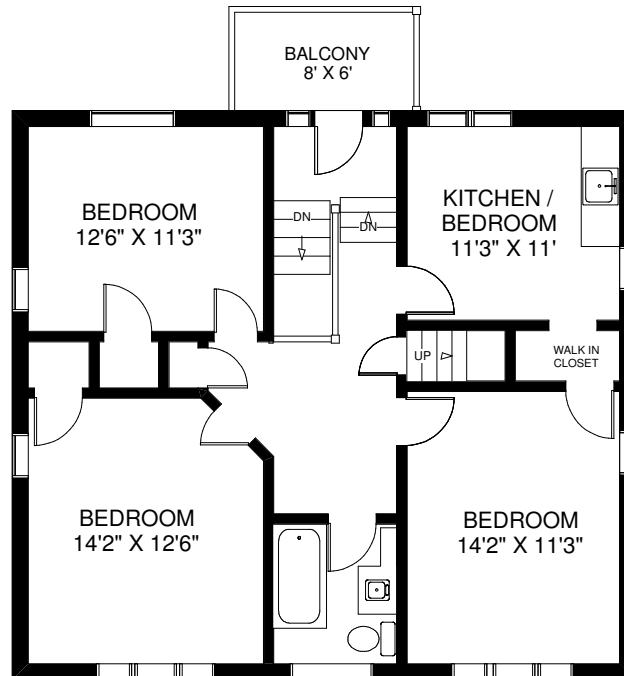
APPROXIMATELY 2,430 SQ FT ABOVE GRADE



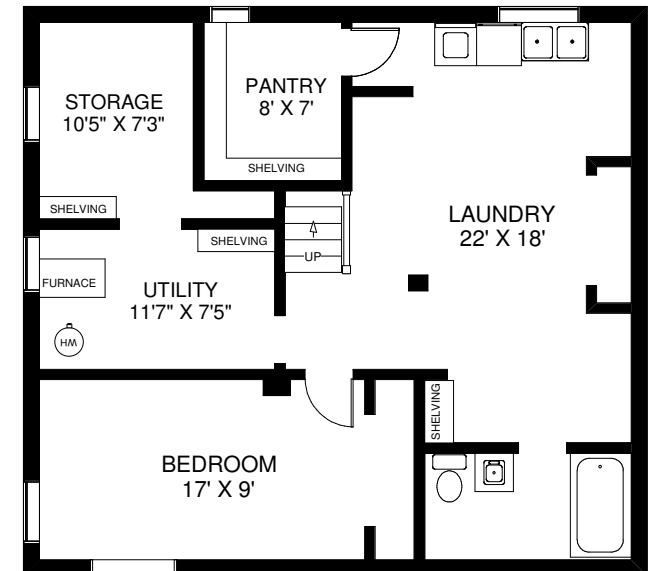
CEILING HT 7'  
THIRD FLOOR  
APPROXIMATELY 500 SQ FT



CEILING HT 8'5"  
MAIN FLOOR  
APPROXIMATELY 965 SQ FT



CEILING HT 8'5"  
SECOND FLOOR  
APPROXIMATELY 965 SQ FT



CEILING HT 7'  
LOWER FLOOR  
APPROXIMATELY 965 SQ FT

Note: Measurements & Calculations are approximate. Provided as a guideline only.