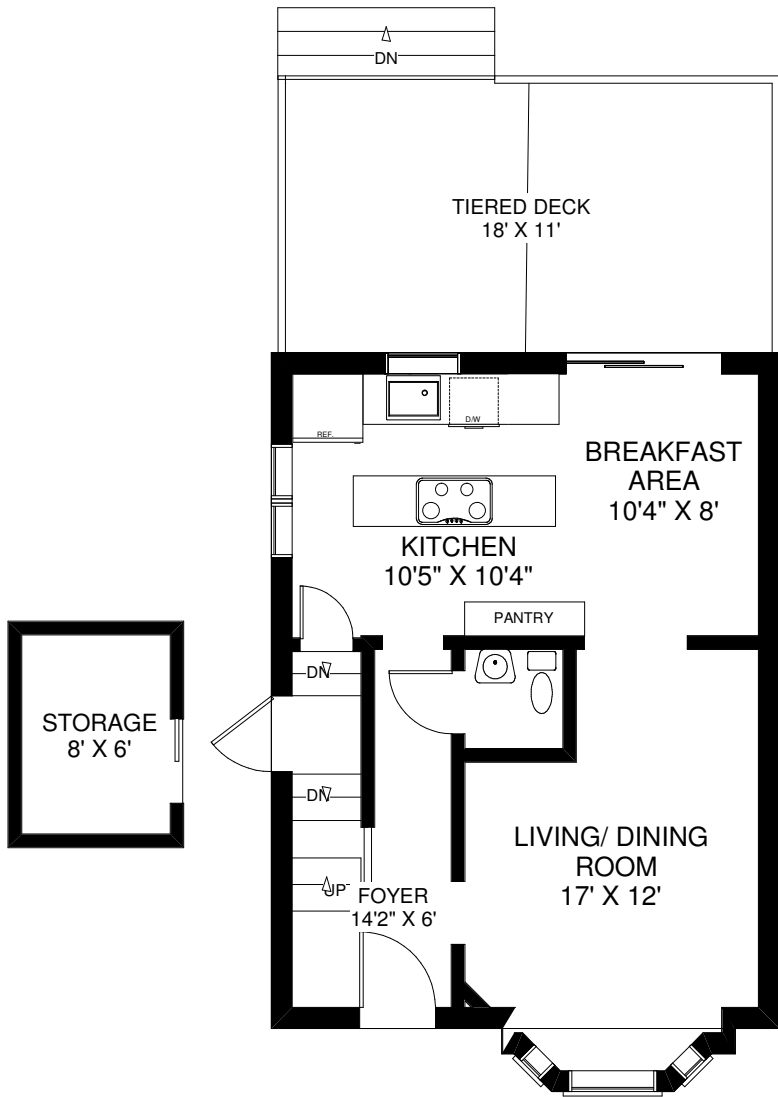


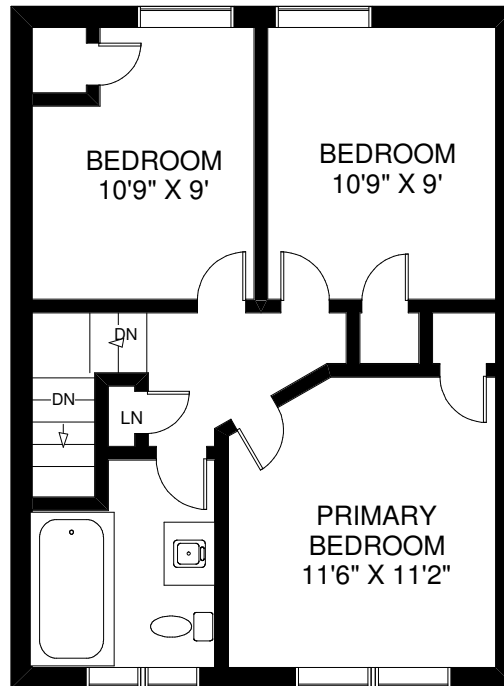
# 16 COE HILL DRIVE

TOTAL APPROXIMATELY 1,090 SQ FT  
ABOVE GRADE



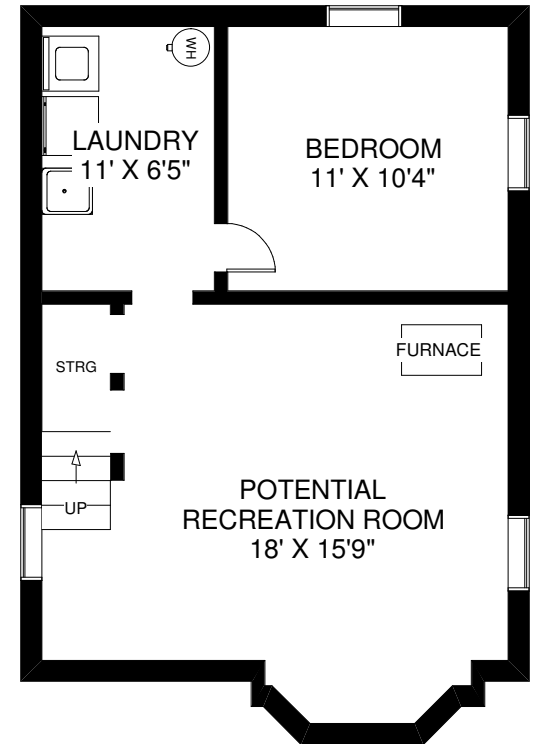
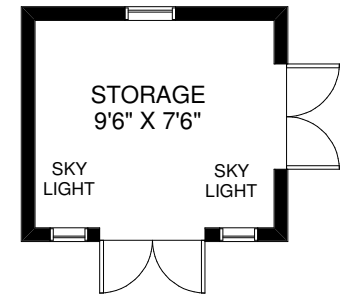
CEILING HT 8'

MAIN FLOOR  
APPROXIMATELY 550 SQ FT



CEILING HT 7'10"

SECOND FLOOR  
APPROXIMATELY 540 SQ FT



CEILING HT 6'7"

LOWER FLOOR  
APPROXIMATELY 550 SQ FT

Note: Measurements & Calculations are approximate. Provided as a guideline only.